

General Specifications

Motor Protection:

Auto Restart/Polarity Protection

Insulation Resistance:

10M Ω or over with a DC500V Megger

Dielectric Withstand Voltage: AC 700V 1s

Allowable Ambient Temperature Range:

-10°C ~ +70°C (Operating)

-40°C ~ +70°C (Storage)

(non-condensing environment)

Expected Life

Failure Rate: 10%

25°C 100,000 Hours (L10)

Material

Casing : Plastic (Black) 94V-0

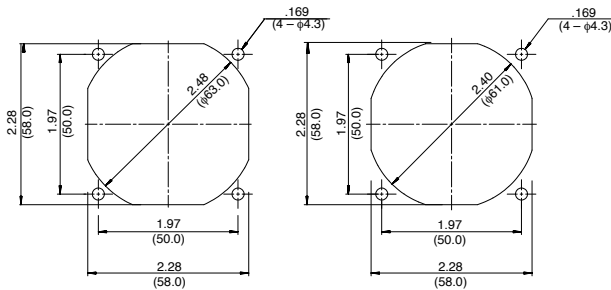
Impeller : Plastic (Black) 94V-0

Bearing : Ball Bearing

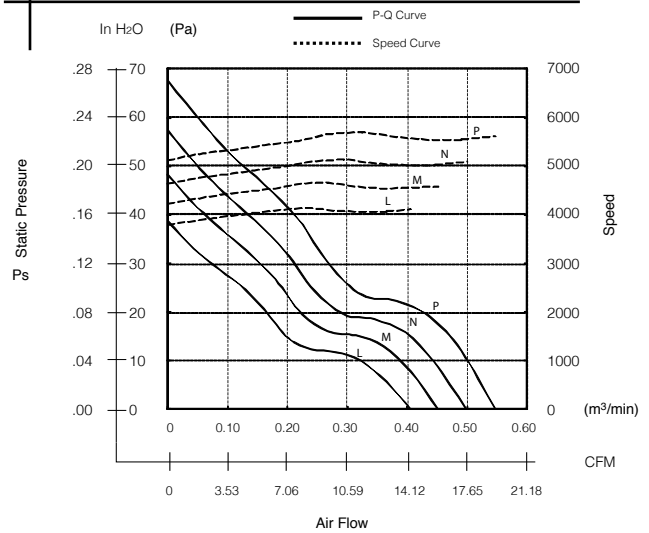
Lead Wire : UL3385, AWG26, +Red, -Black

Panel Cut-Outs

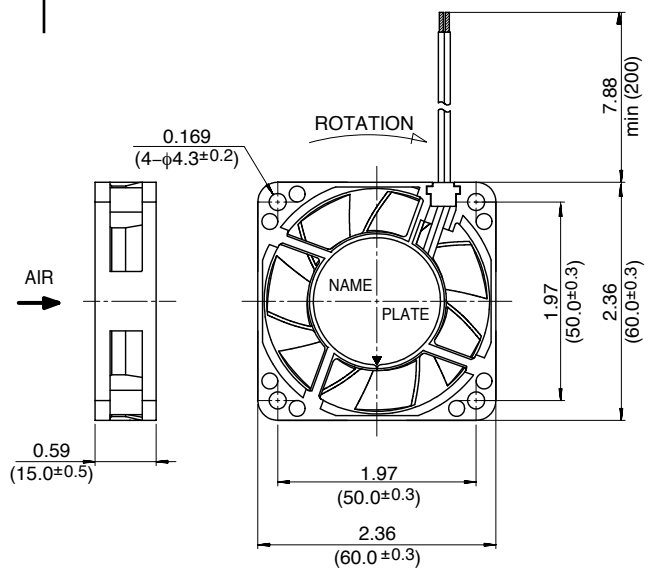
Units: $\frac{\text{inch}}{\text{(mm)}}$



Characteristic Curves



Outline



Specifications

MODEL	Product No.	Rated Voltage	Operating Voltage	Current	Input Power	Speed	Max. Air Flow		Max. Static Pressure		Noise	Mass
		(V)	(V)	(A) ^{*1}	(W) ^{*1}	(min ⁻¹) ^{*1}	CFM ^{*1}	(m ³ /min) ^{*1}	in H ₂ O	(Pa) ^{*1}	(dB) ^{*1}	(g)
06015VA-12L-AA	00	12	6.0 ~ 13.8	0.08	0.96	4100	14.5	0.41	0.16	38.8	28.5	55
06015VA-12M-AA	00	12	6.0 ~ 13.8	0.11	1.32	4600	15.9	0.45	0.19	48.3	31.0	55
06015VA-12N-AA	00	12	6.0 ~ 13.8	0.12	1.44	5100	17.6	0.50	0.23	57.5	33.5	55
06015VA-12P-AA	00	12	6.0 ~ 13.8	0.13	1.56	5600	19.4	0.55	0.27	67.7	36.5	55
06015VA-24L-AA	00	24	10.0 ~ 27.6	0.04	0.96	4100	14.5	0.41	0.16	38.8	28.5	55
06015VA-24M-AA	00	24	10.0 ~ 27.6	0.05	1.20	4600	15.9	0.45	0.19	48.3	31.0	55
06015VA-24N-AA	00	24	10.0 ~ 27.6	0.06	1.44	5100	17.6	0.50	0.23	57.5	33.5	55
06015VA-24P-AA	00	24	10.0 ~ 27.6	0.07	1.68	5600	19.4	0.55	0.27	67.7	36.5	55

Rotation: Clockwise

Airflow Outlet: Air Out Over Struts

*1: Average Values in Free Air