

General Specifications

Motor Protection:

Auto Restart/Polarity Protection

Insulation Resistance:

10M Ω or over with a DC500V Megger

Dielectric Withstand Voltage: AC 700V 1s

Allowable Ambient Temperature Range:

-10°C ~ +70°C (Operating)

-30°C ~ +70°C (Storage)

(non-condensing environment)

Expected Life

40°C 70,000 Hours (L10)

Material

Casing : Plastic (Black) UL94V-0

Impeller : Plastic (Black) UL94V-0

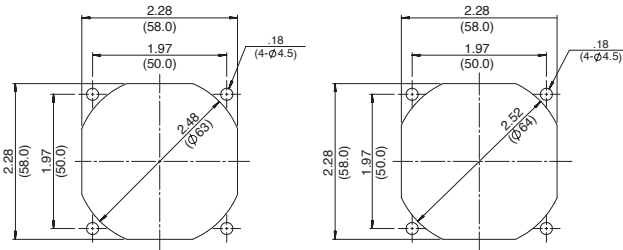
Bushing : Plastic (Black)

Bearing : Ball Bearing

Lead Wire : UL10368, UL1061, AWG24, +Red, -Black

Panel Cut-Outs

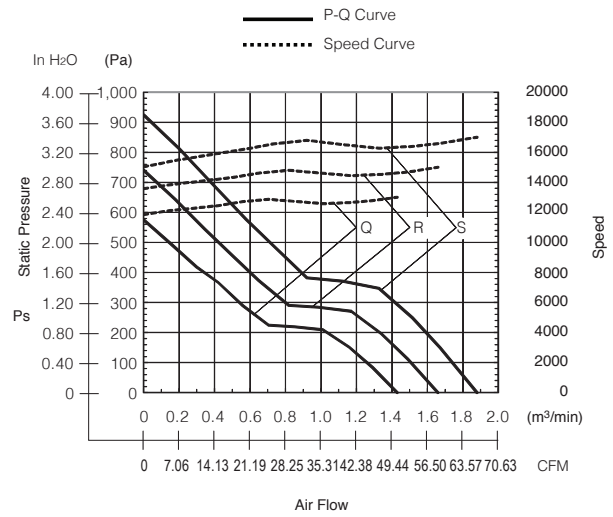
Units: $\frac{\text{inch}}{\text{mm}}$



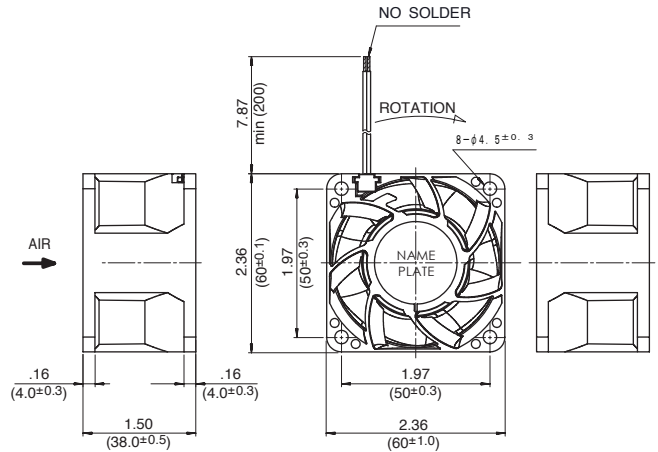
INLET SIDE

OUTLET SIDE

Characteristic Curves



Outline



Specifications

MODEL	Rated Voltage	Operating Voltage	Current	Input Power	Speed	Max. Air Flow		Max. Static Pressure		Noise	Mass
	(V)	(V)	(A) ^{*1}	(W) ^{*1}	(min ⁻¹) ^{*1}	CFM ^{*1}	(m ³ /min) ^{*1}	in H ₂ O	(Pa) ^{*1}	(dB) ^{*1}	(g)
06038DA-12Q-EAD-0	12	10.8 ~ 13.2	0.78	9.4	13000	50.15	1.43	2.31	575	58.0	123
06038DA-12R-EAD-0	12	10.8 ~ 13.2	1.16	14.0	15000	58.62	1.66	2.97	740	61.5	123
06038DA-12S-EAD-0	12	10.8 ~ 13.2	1.65	19.8	17000	66.39	1.88	3.71	925	63.5	123

06038DA (旧2415FB)

DC Axial Fan

60[□]X38^L

DC FAN

汎用

産業用

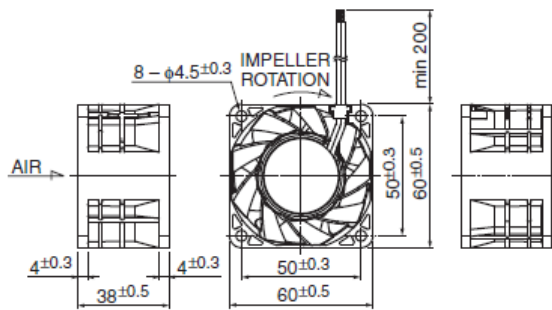
サーバー

冷却庫

ブロー



■ 外観図 Outline



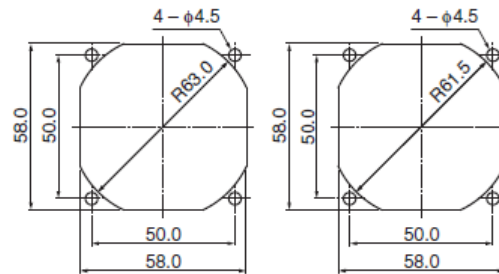
■ 一般仕様 General Specifications

- モーター保護 : 自動復帰方法、逆接続防止
Motor Protection : Auto Restart / Polarity Protection
- 絶縁抵抗 : DC500V メガにて10MΩ以上
Insulation Resistance : 10MΩ or over with a DC500V Megger
- 絶縁耐圧 : AC700V 1s
Dielectric Withstand Voltage
- 許容環境温度範囲 : -10℃ ~ +70℃ (Operating)
Allowable Ambient Temperature Range : -30℃ ~ +70℃ (Storage)
実用上さしつかえない状態で結露無きこと
non-condensing environment

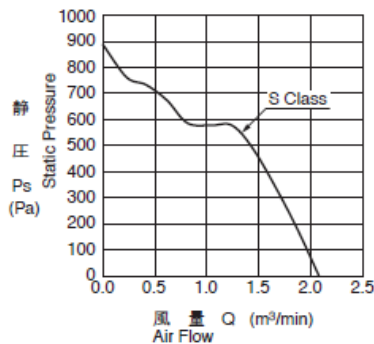
- 期待できる寿命 ※故障率 10% (L10 Life)
Expected Life ※ Failure Rate: 10% (L10 Life)
40℃ 70,000 時間 (Hours)

■ 取付穴参考図 Panel Out-cuts

吸入側 (Inlet Side) 吐出側 (Outlet Side)



■ 特性曲線 Characteristic Curves



■ 材質 Material

- ケーシング : プラスチック(ブラック) UL94V-0
 - インペラー : プラスチック(ブラック) UL94V-0
 - 軸受 : ボールベアリング
 - リード線 : UL10368 AWG24 +: 赤 -: 黒
- Casing : Plastic (Black) UL94V-0
 - Impeller : Plastic (Black) UL94V-0
 - Bearing : Ball Bearing
 - Lead Wire : UL10368 AWG24 +: Red, -: Black

■ 仕様 Specifications

型式 Model	管理番号 Product No.	定格電圧 Rating Voltage (V)	使用電圧範囲 Operating Voltage (V)	定格電流 Current (A)*1	定格入力 Input Power (W)*1	定格回転速度 Speed (min ⁻¹)*1	最大風量 Max. Air Flow (m ³ /min)*1 (CFM)*1	最大静圧 Max. Static Pressure (Pa)*1 (In H ₂ O)*1	騒音 Noise (dB)*1	質量 Mass (g)
06038DA-12S-ECF	0	12	10.8 ~ 13.2	2.80	33.60	17000	2.07 (73.1)	887.0 (3.55)	66.5	125

回転方向 : ラベルから見て時計方向
風吹き出し方向 : ラベル側
Rotation: Clockwise as seen from the label side
Airflow Outlet: Label side

*1: Average Values in Free Air