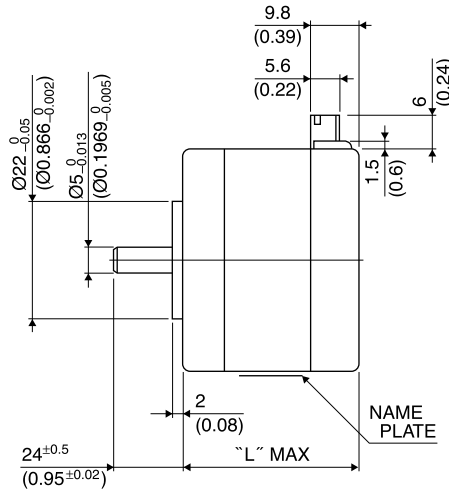
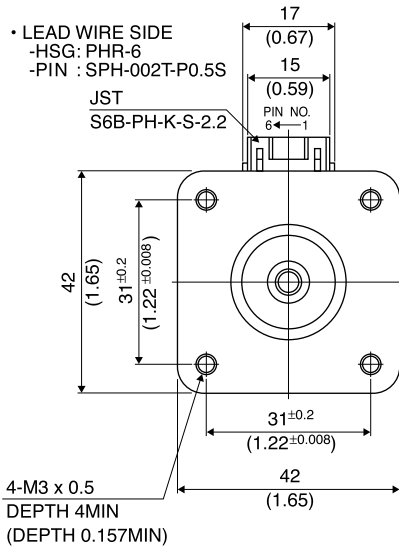


Outline



Hybrid

UNIT: mm (inch)

	"L"
17PM-J7**	26 (1.02)
17PM-J2**	30 (1.18)
17PM-J0**	34 (1.34)
17PM-J3**	38 (1.50)
17PM-J1**	42 (1.65)
17PM-J4**	48 (1.89)

PIN NO. vs. PHASE

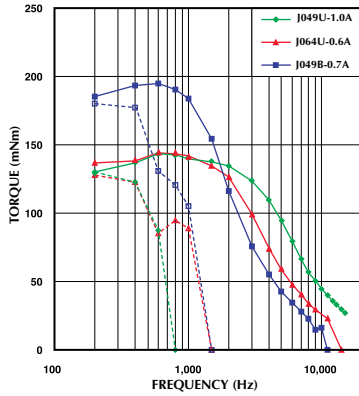
PHASE	A	A COM	\bar{A}	B	B COM	\bar{B}
PIN NO.	4	5	6	3	2	1

Specifications

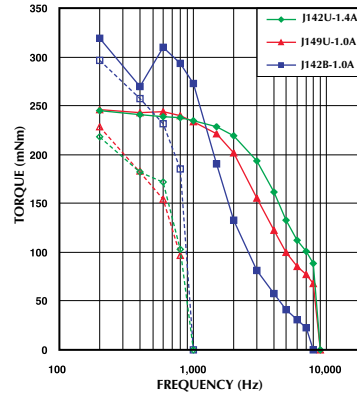
Model	Step Angle (deg)	Drive Sequence	Rated Current (A)	Resistance (Ohms)	Holding Torque (mNm)	Inductance (mH)	Rotor Inertia ($g \cdot cm^2$)	Detent Torque (mNm)	Mass (g)
17PM-J049U	1.8	UNI-POLAR	1	3.1	160	3.3	26	9.8	200
17PM-J064U	1.8	UNI-POLAR	0.6	8.3	160	8.2	26	9.8	200
17PM-J142U	1.8	UNI-POLAR	1.4	2.3	250	3.1	44	8.3	300
17PM-J149U	1.8	UNI-POLAR	1	4.3	250	5.9	44	8.3	300
17PM-J249U	1.8	UNI-POLAR	0.8	2.7	85	2.6	17	3.9	180
17PM-J264U	1.8	UNI-POLAR	0.6	6.9	85	6.7	17	3.9	180
17PM-J342U	1.8	UNI-POLAR	1.4	2.0	210	2.4	35	7.9	250
17PM-J349U	1.8	UNI-POLAR	1	3.6	210	4.7	35	7.9	250
17PM-J442U	1.8	UNI-POLAR	1.4	2.8	320	3.3	54	14.7	350
17PM-J449U	1.8	UNI-POLAR	1	4.9	320	6.3	54	14.7	350
17PM-J749U	1.8	UNI-POLAR	0.9	2.2	35	1.4	8	2.8	150
17PM-J764U	1.8	UNI-POLAR	0.6	5.6	35	0.9	8	2.8	150
17PM-J049B	1.8	BI-POLAR	0.7	6.2	205	13.0	26	9.8	200
17PM-J142B	1.8	BI-POLAR	1	4.6	320	12.5	44	8.3	300
17PM-J249B	1.8	BI-POLAR	0.6	5.4	120	10.4	17	3.9	180
17PM-J342B	1.8	BI-POLAR	0.9	4.0	260	9.7	35	7.9	250
17PM-J442B	1.8	BI-POLAR	0.9	5.6	390	13.2	54	14.7	350
17PM-J749B	1.8	BI-POLAR	0.6	4.4	53	5.8	8	2.8	150

Torque/Speed Characteristics

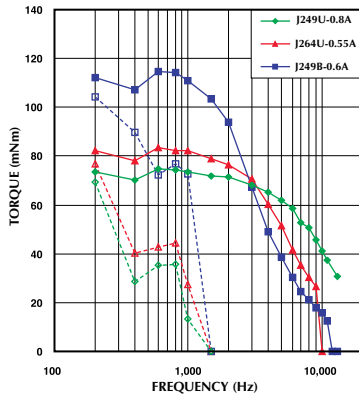
Model No: 17PM-J049U,M064U,J049B
 Driver: Chopper Dual
 Supply Voltage: 24.0 (Volt)



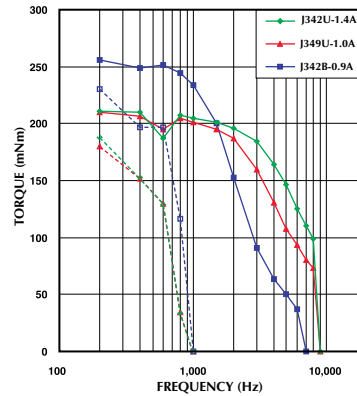
Model No: 17PM-J142U,J149U,J142B
 Driver: Chopper Dual
 Supply Voltage: 24.0 (Volt)



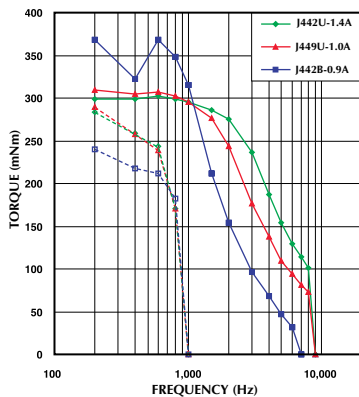
Model No: 17PM-J249U,J264U,J249B
 Driver: Chopper Dual
 Supply Voltage: 24.0 (Volt)



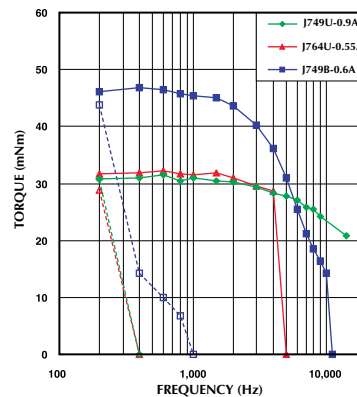
Model No: 17PM-J342U,J349U,J342B
 Driver: Chopper Dual
 Supply Voltage: 24.0 (Volt)



Model No: 17PM-J442U,J449U,J442B
 Driver: Chopper Dual
 Supply Voltage: 24.0 (Volt)



Model No: 17PM-J749U,J764U,J749B
 Driver: Chopper Dual
 Supply Voltage: 24.0 (Volt)



— : PULL OUT
 - - - : PULL IN