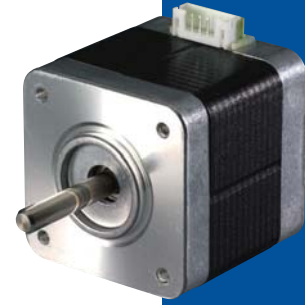
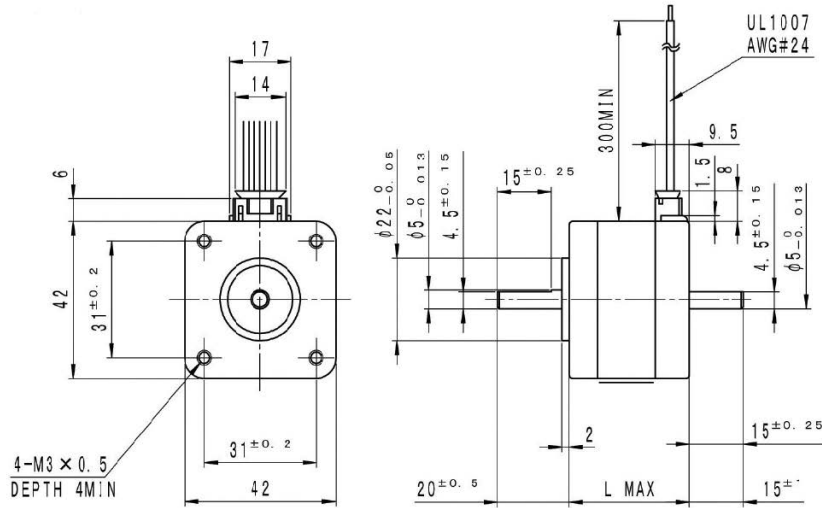


Outline

Standard



Hybrid

	"L"
17PM-X0XX	34 (1.34)
17PM-X8XX	40 (1.58)
17PM-X4XX	48 (1.89)

Specifications

Model	Motor Size (mm)	Step Angle (deg)	Rated Current (A)	Resistance (Ohms)	Holding Torque (mNm)	Mass (g)
17PM-K053-00VS/99VS	42 ~ 34	1.8	0.85	4.2	170	200
17PM-K845-00VS/99VS	42 ~ 40	1.8	1.2	2.9	270	300
17PM-K858-00VS/99VS	42 ~ 40	1.8	0.75	7.4	270	300
17PM-K444-00VS/99VS	42 ~ 48	1.8	1.2	3.3	340	350
17PM-K455-00VS/99VS	42 ~ 48	1.8	0.8	7.3	340	350

Torque/Speed Characteristics

Model No.: 17PM-K053U, K845U, K858U, K444U, K455U
 Driver: Chopper Dual
 Supply Voltage: 24 (volt)

