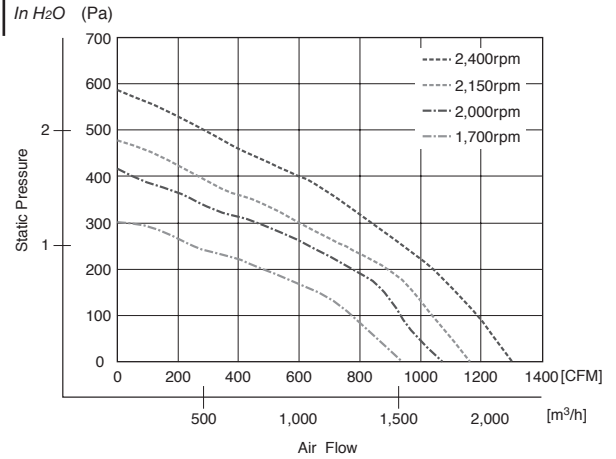




## Characteristic Curves



## General Specifications

### Motor Protection:

Locked Rotor, Reverse Polarity

### Insulation Resistance:

10M Ω min measured with 500V DC between all leads shorted together and case

### Dielectric Withstand Voltage: AC 500V 1 minute

### Allowable Ambient Temperature Range:

-30°C ~ +70°C (Operating)  
-40°C ~ +80°C (Storage)

## Expected Life

### L10 Life:

40°C 70,000 Hours

## Material

Impeller : Aluminum

Bearing : Ball Bearing

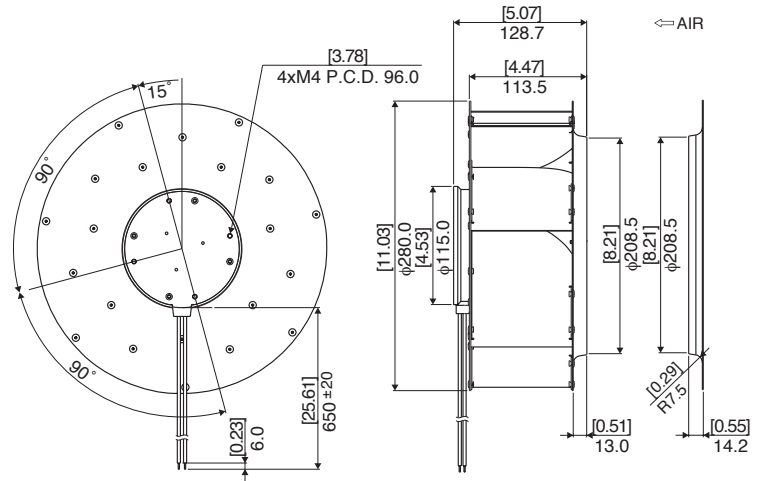
Lead Wire: UL1015, AWG18, +Red, -Black,

Speed Control = Yellow,

Speed Signal = White

## Outline

Units: [inch]  
mm



## Specifications

MODEL	Rated Voltage	Operating Voltage	Current	Input Power	Speed	Max. Air Flow		Max. Static Pressure		Noise	Mass
	(V)	(V)	(A) <sup>*1</sup>	(W) <sup>*1</sup>	(min <sup>-1</sup> ) <sup>*1</sup>	CFM <sup>*1</sup>	(m <sup>3</sup> /hr) <sup>*1</sup>	in H <sub>2</sub> O	(Pa) <sup>*1</sup>	(dB) <sup>*1</sup>	(g)
F280A1-113-D0720	48	36 ~ 72	5.30	254.4	2400	1333	2265	2.43	607	81	2100
F280A2-113-D0720	48	36 ~ 72	3.40	163.2	2000	1131	1922	1.72	430	75	2100
F280A3-113-D0520	24	18 ~ 30	7.10	170.4	2150	1173	1993	1.96	489	77	2100
F280A4-113-D0510	24	18 ~ 30	3.80	91.2	1700	940	1597	1.25	313	70	2100

Rotation: Clockwise looking at Air Inlet

\*1: Average Values in Free Air and Rated Voltage Condition