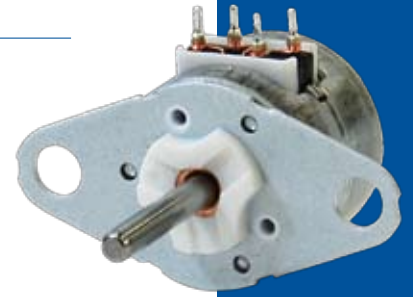
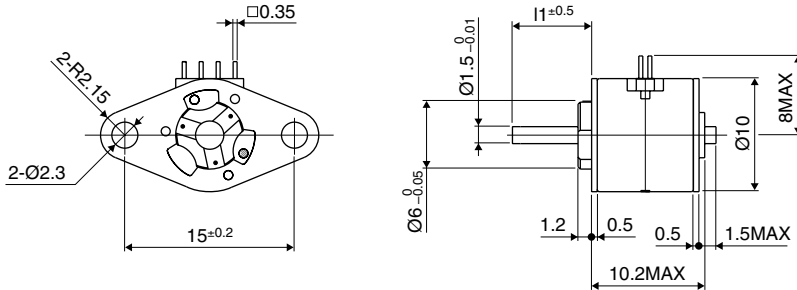


Dimensions



PM Motor

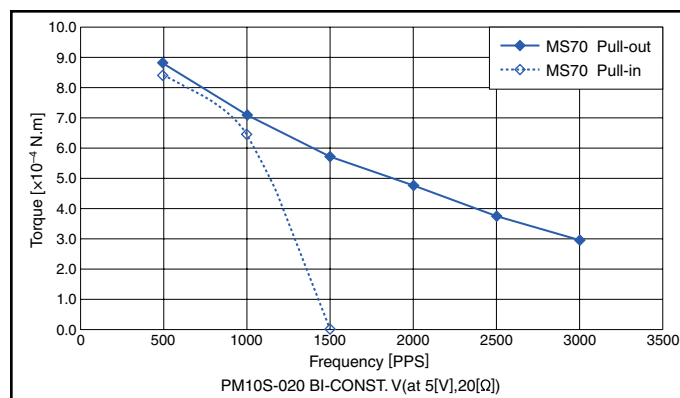
*Please contact our sales for inventory and lot information. Specification may be changed without notice.

Reference Characteristics

Motor Size	PM10S-020
Number of Steps per Rotation	20 (18°/Step)
Drive Method	2-2 Phase
Drive Circuit	Bipolar Const. Volt.
Drive Voltage	5 [V]
Current/Phase	
Coil Resistance/Phase	20 [Ω]
Drive IC	L293D
Magnet Material	Nd-Fe-B bonded magnet (MS70)
Insulation Resistance	100M [Ω] MIN
Dielectric Strength	AC 500 [V] 1 [min]
Class of Insulation	CLASS E
Operating Temperature	-10[°C] ~ 50 [°C]
Storage Temperature	-30 [°C] ~ 80 [°C]
Operating Humidity	20 [%] RH ~ 90 [%] RH

*Bipolar only. Unipolar is not available.

Torque Characteristics



These torque values are reference only. Heat radiation conditions and temperature rise effect by duty are different on each equipment, therefore please select motors after considering the actual equipment.

Applications

- OA Equipment: Printers/Scanners
- Optical Instruments: Cameras/Digital Cameras/Video Cameras