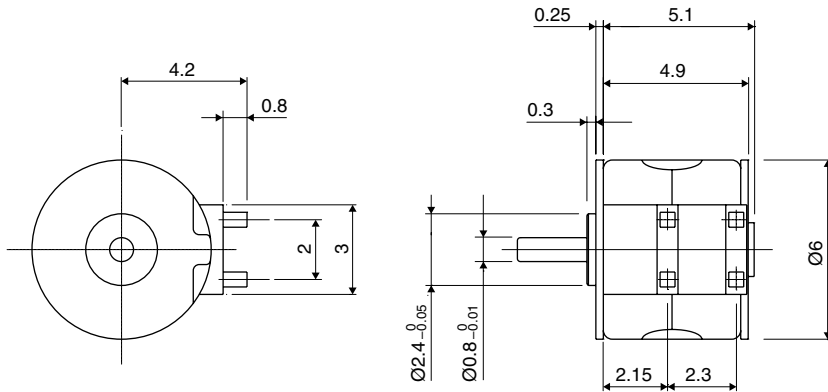


Outline

Small Diameter



PM

*Please contact our sales for inventory and lot information. Specification may be changed without notice.

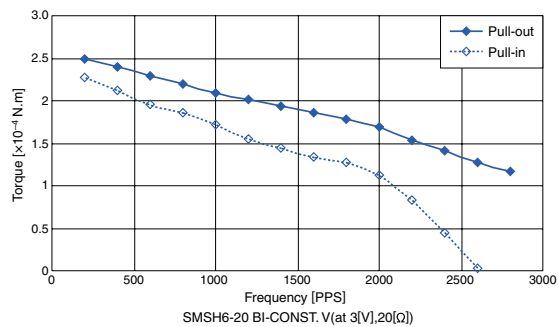
Specifications

| Number of Steps per Rotation | Drive Method | Drive Circuit | Drive Voltage | Current/Phase | Coil Resistance/Phase | Drive IC |
|------------------------------|--------------|----------------------|---------------|---------------|-----------------------|----------|
| 20 (18°/Step) | 2-2 Phase | Bipolar Const. Volt. | 3 [V] | | 20 [Ω] | LB1836M |

| Magnet Material | Insulation Resistance | Dielectric Strength | Class of Insulation | Operating Temperature | Storage Temperature | Operating Humidity |
|-----------------------------|-----------------------|-----------------------|---------------------|-----------------------|---------------------|----------------------|
| Nd-Fe-B bonded magnet (N51) | 1M [Ω] MIN | AC 100 [V] 1 [min] | CLASS E | -10 [°C] ~ 50 [°C] | -25 [°C] ~ 60 [°C] | 5 [%] RH ~ 85 [%] RH |

*Bipolar only. Unipolar is not available.
*No dew condensation.

Torque/Speed Characteristics



These torque values are reference only. Heat radiation conditions and temperature rise effect by duty are different on each equipment, therefore please select motors after considering the actual equipment.

Applications

- Optical Instrument: Digital cameras/ Blu-ray aberration correction
- Telecommunication Equipment: Smart Phone/Tablet