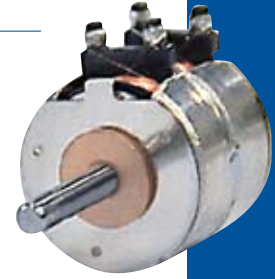
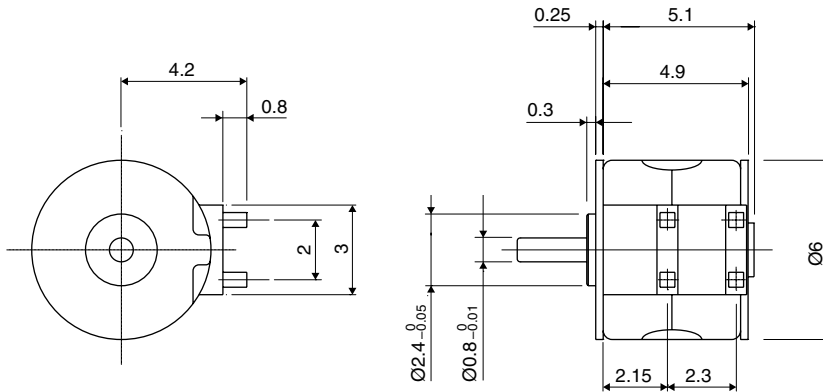


■ Dimensions

Small Diameter PM Stepper Motor



PM Motor

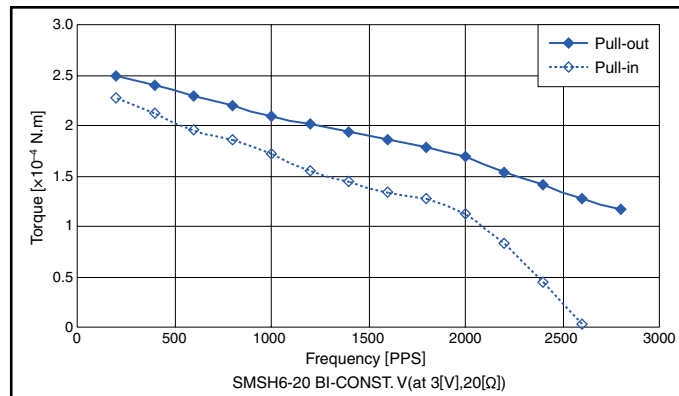
*Please contact our sales for inventory and lot information. Specification may be changed without notice.

■ Reference Characteristics

Motor Size	SMSH6 - 20
Number of Steps per Rotation	20 (18°/Step)
Drive Method	2-2 Phase
Drive Circuit	Bipolar Const. Volt.
Drive Voltage	3 [V]
Current/Phase	
Coil Resistance/Phase	20 [Ω]
Drive IC	LB1836M
Magnet Material	Nd-Fe-B bonded magnet (N51)
Insulation Resistance	1M [Ω] MIN
Dielectric Strength	AC 100 [V] 1 [min]
Class of Insulation	CLASS E
Operating Temperature	-10[°C] ~ 50 [°C]
Storage Temperature	-25 [°C] ~ 60 [°C]
Operating Humidity	5 [%] RH ~85 [%] RH

*Bipolar only. Unipolar is not available.
*No dew condensation.

■ Torque Characteristics



These torque values are reference only. Heat radiation conditions and temperature rise effect by duty are different on each equipment, therefore please select motors after considering the actual equipment.

■ Applications

- Optical instrument: Digital cameras/ Blu-ray/ Aberration correction
- Telecommunication equipment: Smart phone/ Tablet