

Programming Instructions

Performance Line



Step 1:

Verify you have the following materials:

- Your PC for programming
- Programming Box
- Programming Cables
- Performance Line CLSD Driver to be programmed

Step 2:

Verify you have completed the Programming Utility installation process. If not, please download the installer for the NMB Technologies Programming Utility from:

<http://www.nmbtc.com/lighting/install-performance.html>

Step 3:

Plug the USB connector end of one of your Programming Cables into your PC.



Step 4:

Plug the Mini-USB Connector end of the Programming Cable into the Programming Box.



Step 5:

Connect the Auxiliary Cable to the Performance Line Driver.

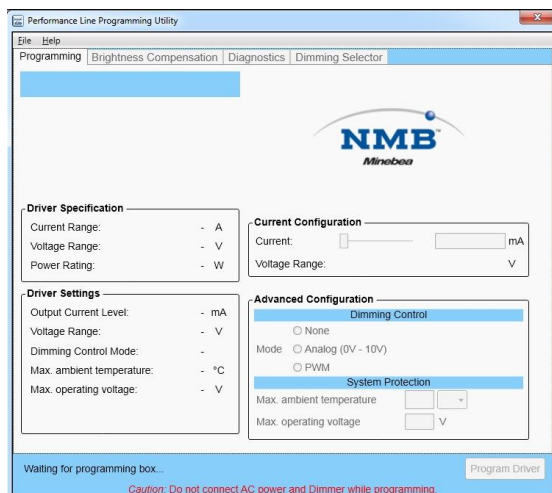


Programming Instructions

Performance Line

Step 6:

Run the NMB Performance Line Program Utility from the start menu. The Utility will prompt your next step: "Waiting for Programming Box".



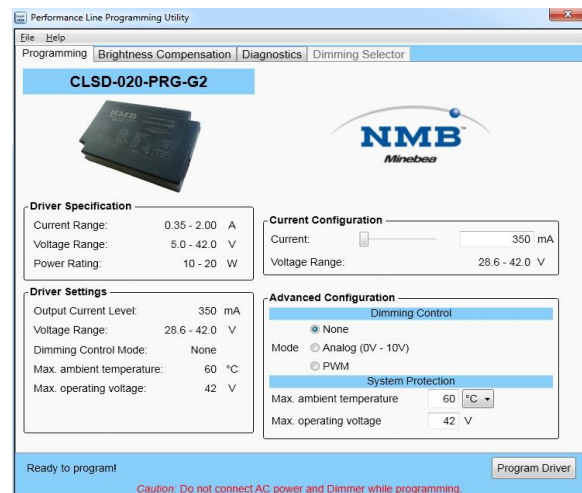
Step 7:

Connect the other end of the Auxiliary Cable to the Programming Box.



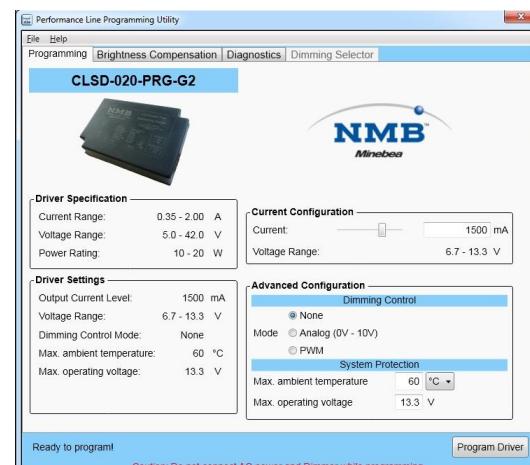
Step 8:

The LED Driver specs and settings will be automatically detected by the Utility. Your driver is now ready to be programmed.



Step 9:

Enter the desired output current in the Current Configuration box and Click "Program Driver".



Programming is now complete!