

## General Specifications

### Motor Protection:

Auto Restart/Polarity Protection

### Insulation Resistance:

10M Ω or over with a DC500V Megger

### Dielectric Withstand Voltage: AC 700V 1s

### Allowable Ambient Temperature Range:

-10°C ~ +70°C (Operating)

-40°C ~ +70°C (Storage)

(non-condensing environment)

## Expected Life

### Failure Rate: 10%

25°C 100,000 Hours (L10)

## Material

Casing : Plastic (Black) 94V-0

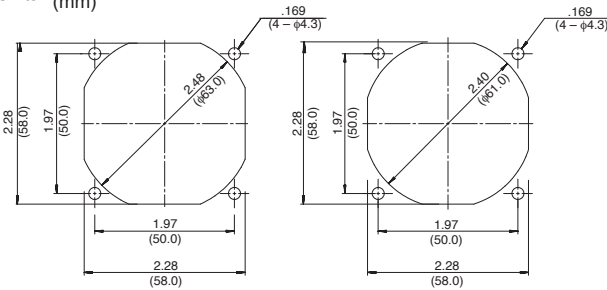
Impeller : Plastic (Black) 94V-0

Bearing : Ball Bearing

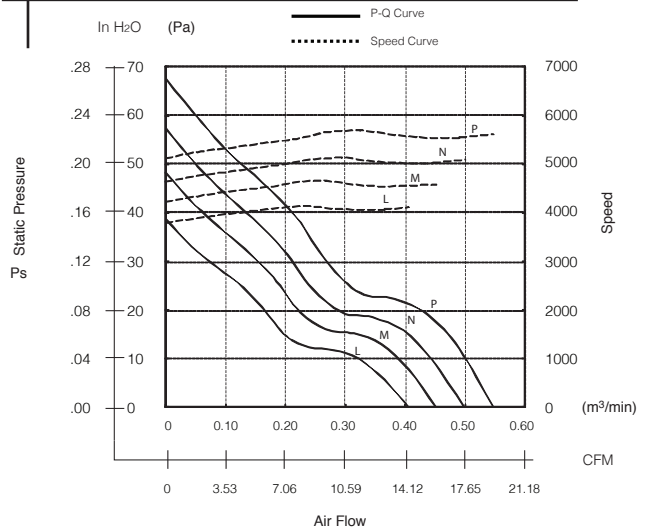
Lead Wire : UL3385, AWG26, +Red, -Black, White

## Panel Cut-Outs

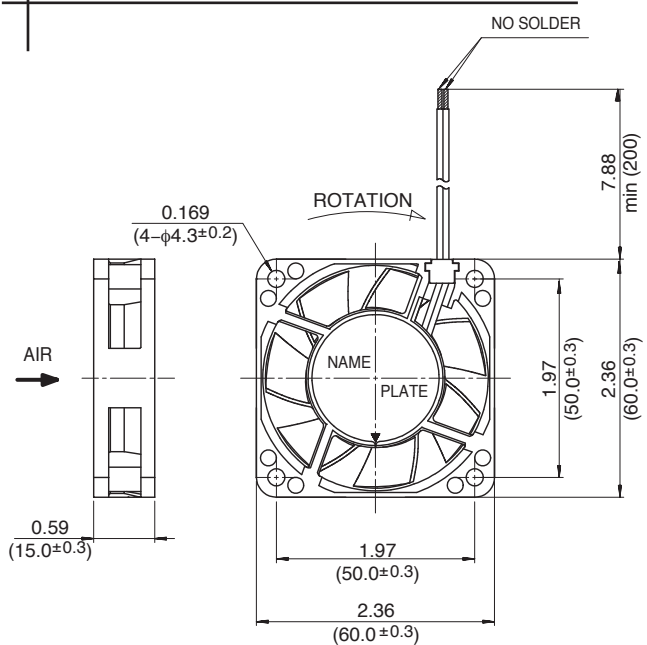
Units: inch (mm)



## Characteristic Curves



## Outline



## Specifications

MODEL	Product No.	Rated Voltage	Operating Voltage	Current	Input Power	Speed	Max. Air Flow		Max. Static Pressure		Noise	Mass
		(V)	(V)	(A) <sup>*1</sup>	(W) <sup>*1</sup>	(min <sup>-1</sup> ) <sup>*1</sup>	CFM <sup>*1</sup>	(m <sup>3</sup> /min) <sup>*1</sup>	in H <sub>2</sub> O	(Pa) <sup>*1</sup>	(dB) <sup>*1</sup>	(g)
06015VA-12L-AX-00	A	12	6.0 ~ 13.8	0.08	0.96	4100	14.5	0.41	0.16	38.8	28.5	55
06015VA-12L-AX-00	L	12	6.0 ~ 13.8	0.08	0.96	4100	14.5	0.41	0.16	38.8	28.5	55
06015VA-12L-AX-00	T	12	6.0 ~ 13.8	0.08	0.96	4100	14.5	0.41	0.16	38.8	28.5	55
06015VA-12M-AX-00	A	12	6.0 ~ 13.8	0.11	1.32	4600	15.9	0.45	0.19	48.3	31.0	55
06015VA-12M-AX-00	L	12	6.0 ~ 13.8	0.11	1.32	4600	15.9	0.45	0.19	48.3	31.0	55
06015VA-12M-AX-00	T	12	6.0 ~ 13.8	0.11	1.32	4600	15.9	0.45	0.19	48.3	31.0	55
06015VA-12N-AX-00	A	12	6.0 ~ 13.8	0.12	1.44	5100	17.7	0.50	0.23	57.5	33.5	55
06015VA-12N-AX-00	L	12	6.0 ~ 13.8	0.12	1.44	5100	17.7	0.50	0.23	57.5	33.5	55
06015VA-12N-AX-00	T	12	6.0 ~ 13.8	0.12	1.44	5100	17.7	0.50	0.23	57.5	33.5	55
06015VA-12P-AX-00	A	12	6.0 ~ 13.8	0.13	1.56	5600	19.4	0.55	0.27	67.7	36.5	55
06015VA-12P-AX-00	L	12	6.0 ~ 13.8	0.13	1.56	5600	19.4	0.55	0.27	67.7	36.5	55
06015VA-12P-AX-00	T	12	6.0 ~ 13.8	0.13	1.56	5600	19.4	0.55	0.27	67.7	36.5	55

Rotation: Clockwise

Airflow Outlet: Air Out Over Struts

\*1: Average Values in Free Air

## Specifications

MODEL	Product No.	Rated Voltage	Operating Voltage	Current	Input Power	Speed	Max. Air Flow		Max. Static Pressure		Noise	Mass
		(V)	(V)	(A)*1	(W)*1	(min <sup>-1</sup> )*1	CFM*1	(m <sup>3</sup> /min)*1	in H <sub>2</sub> O	(Pa)*1	(dB)*1	(g)
06015VA-24L-AX-00	A	24	10.0 ~ 27.6	0.04	0.96	4100	14.5	0.41	0.16	38.8	28.5	55
06015VA-24L-AX-00	L	24	10.0 ~ 27.6	0.04	0.96	4100	14.5	0.41	0.16	38.8	28.5	55
06015VA-24L-AX-00	T	24	10.0 ~ 27.6	0.04	0.96	4100	14.5	0.41	0.16	38.8	28.5	55
06015VA-24M-AX-00	A	24	10.0 ~ 27.6	0.05	1.20	4600	15.9	0.45	0.19	48.3	31.0	55
06015VA-24M-AX-00	L	24	10.0 ~ 27.6	0.05	1.20	4600	15.9	0.45	0.19	48.3	31.0	55
06015VA-24M-AX-00	T	24	10.0 ~ 27.6	0.05	1.20	4600	15.9	0.45	0.19	48.3	31.0	55
06015VA-24N-AX-00	A	24	10.0 ~ 27.6	0.06	1.44	5100	17.7	0.50	0.23	57.5	33.5	55
06015VA-24N-AX-00	L	24	10.0 ~ 27.6	0.06	1.44	5100	17.7	0.50	0.23	57.5	33.5	55
06015VA-24N-AX-00	T	24	10.0 ~ 27.6	0.06	1.44	5100	17.7	0.50	0.23	57.5	33.5	55
06015VA-24P-AX-00	A	24	10.0 ~ 27.6	0.07	1.68	5600	19.4	0.55	0.27	67.7	36.5	55
06015VA-24P-AX-00	L	24	10.0 ~ 27.6	0.07	1.68	5600	19.4	0.55	0.27	67.7	36.5	55
06015VA-24P-AX-00	T	24	10.0 ~ 27.6	0.07	1.68	5600	19.4	0.55	0.27	67.7	36.5	55

Rotation: Clockwise

Airflow Outlet: Air Out Over Struts

\*1: Average Values in Free Air