

General Specifications

Motor Structure: Shaded Pole Induction Motor
 Motor Protection: Impedance Protection
 Insulation Resistance:
 100M Ω or over with a DC500V Megger
 Dielectric Withstand Voltage: AC 1800V 3s
 Allowable Ambient Temperature Range:
 -10°C ~ +70°C (Operating)
 -40°C ~ +70°C (Storage)
 (non-condensing environment)

Expected Life

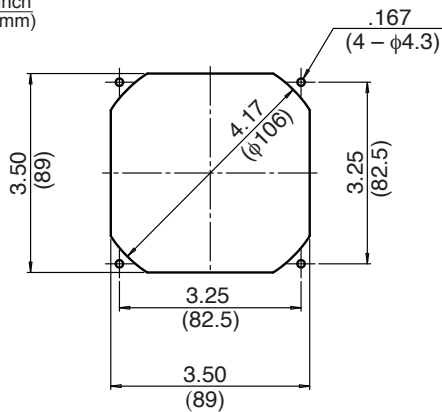
Failure Rate: 10%
 25°C 100,000 Hours

Material

Casing : Aluminum
 Impeller : Polybutylene Terephthalate
 (Glass Fiber Containing)
 Bearing : Ball Bearing
 Terminal : Faston #110 or equivalent

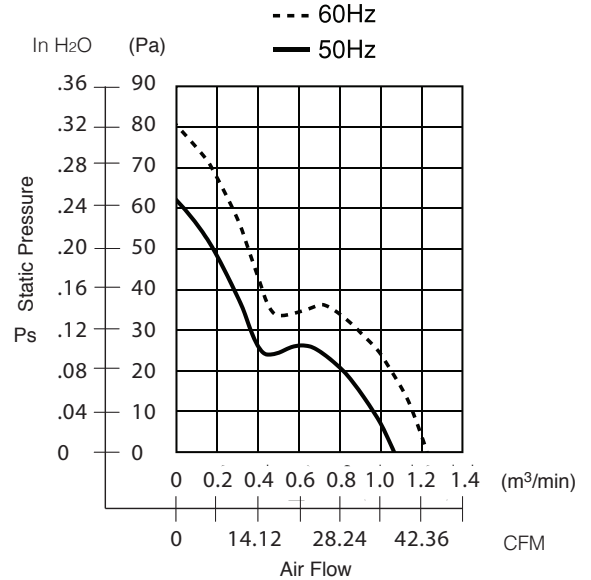
Panel Cut-Outs

Units: $\frac{\text{inch}}{\text{(mm)}}$

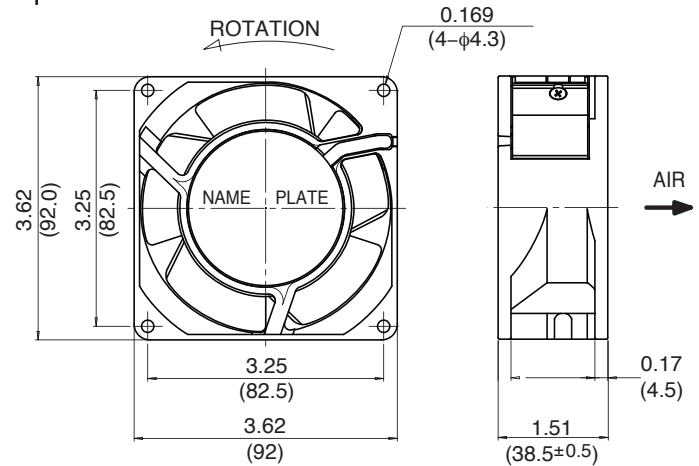


INLET SIDE/OUTLET SIDE

Characteristic Curves



Outline



Specifications

MODEL	Rated Voltage	Frequency	Starting Voltage	Current	Input Power	Speed	Max. Air Flow		Max. Static Pressure		Noise	Mass
	(V)	(Hz)	(V)	(A) ^{*1}	(W) ^{*1}	(min ⁻¹) ^{*3}	CFM	(m ³ /min) ^{*3}	in H ₂ O	(Pa) ^{*3}	(dB) ^{*2}	(g)
09238SB-B3L-EA-00	230	50	175	0.06	8.0	2650	37.5	1.05	0.25	63.0	28	490
	230	60	175	0.05	7.0	3150	44.6	1.25	0.32	80.0	34	490

Rotation: Counterclockwise

Airflow Outlet: Label Side

*1: Maximum Values in Free Air

*2: Average Values in Free Air

*3: Minimum Values in Free Air