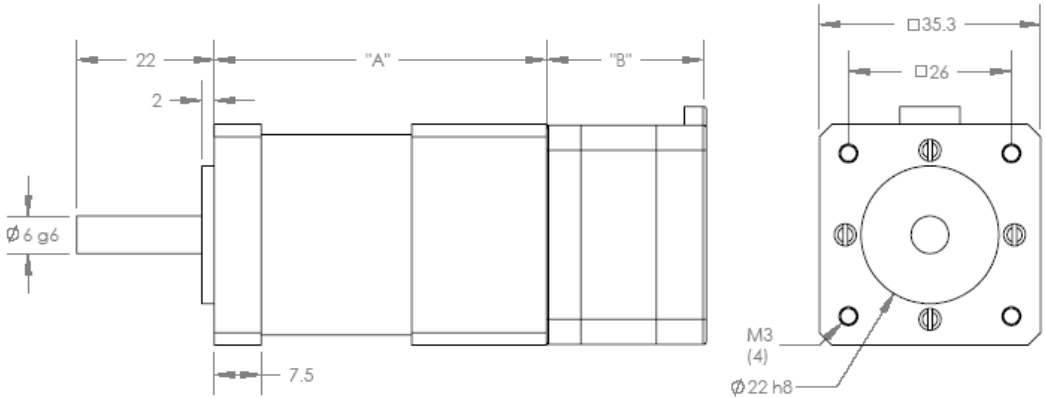
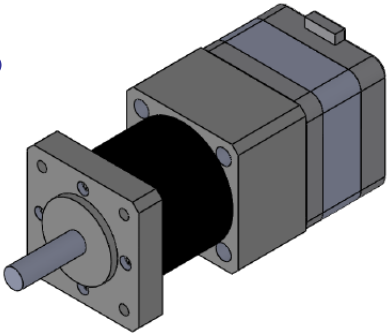


14GN

NEMA14 – 35 □ 0.9°/1.8°/3.75°



Standard Motor Lengths	
Type	"B" (mm)
14GN-K2	22
14GN-K0	26

(PHASE)	A	-B	-A	B
(PIN NO.)	4	1	6	3

Gearbox Ratio Selection

Characteristics				
Dimension "A"	43.5 mm	52.0 mm	62.5 mm	72.0 mm
Max Torque	0.75Nm	2.25Nm	4.50Nm	4.50Nm
GB Eff	80%	75%	70%	65%
Max Backlash	1.5 deg	1.55 deg	1.6 deg	1.65 deg
Max Radial Load	40N	70N	100N	130N
Max Axial Load	10N	20N	30N	40N
GB Weight	160g	210g	260g	310g

Available Ratios							
1 Stage		2 Stages		3 Stages		4 Stages	
XXXX	Act	XXXX	Act	XXXX	Act	XXXX	Act
3:1	(3.70)	14:1	(13.73)	51:1	(50.89)	189:1	(188.61)
4:1	(4.28)	16:1	(15.88)	59:1	(58.85)	218:1	(218.12)
5:1	(5.18)	18:1	(18.36)	68:1	(68.06)	252:1	(252.24)
7:1	(6.75)	19:1	(19.20)	71:1	(71.16)	264:1	(263.72)
		22:1	(22.20)	79:1	(78.71)	292:1	(291.71)
		25:1	(25.01)	93:1	(92.70)	305:1	(304.99)
		27:1	(26.85)	95:1	(95.17)	337:1	(337.35)
		29:1	(28.93)	100:1	(99.50)	344:1	(343.54)
		35:1	(34.97)	107:1	(107.20)	353:1	(352.71)
		46:1	(45.56)	115:1	(115.07)	369:1	(368.76)
				124:1	(123.97)	397:1	(397.29)
				130:1	(129.62)	408:1	(407.89)
				139:1	(139.13)	426:1	(426.46)
				150:1	(149.90)	459:1	(459.45)
				169:1	(168.84)	480:1	(480.36)
				181:1	(181.24)	493:1	(493.18)
				195:1	(195.26)	516:1	(515.62)
				236:1	(236.09)	531:1	(531.34)
				308:1	(307.54)	556:1	(555.52)
						596:1	(596.30)
						626:1	(625.73)
						642:1	(642.42)
						672:1	(671.67)
						721:1	(720.98)
						724:1	(723.63)
						777:1	(776.76)
						837:1	(836.86)
						875:1	(874.94)
						939:1	(939.18)
						1012:1	(1011.84)
						1140:1	(1139.73)
						1223:1	(1223.41)
						1318:1	(1318.05)
						1594:1	(1593.65)

Catalog Part Numbering

14GN – XXX – XXXXX

Step Option

'B' Motor Length

'XXXX' Ratio
S Spur
H Helical

Example:

14GB-BK0-S0079

14GN – 14 Size NEMA Gearbox Motor
BK0 – 1.8 Degree, 26 mm long stator
S0079 – Spur Gearbox ratio of 79:1

Step Options:

- A** - 0.9 Degree
- B** - 1.8 Degree
- C** - 3.75 Degree

Other Available Options:

- Encoders
- Pinions
- Drivers

