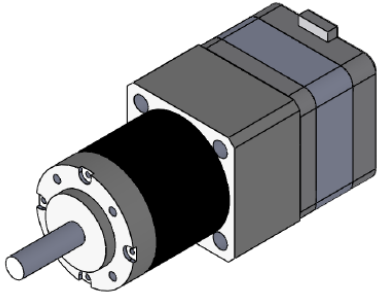
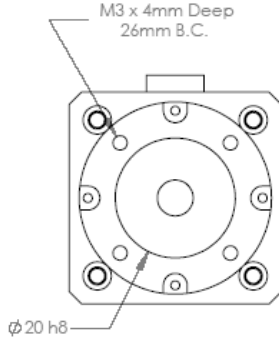
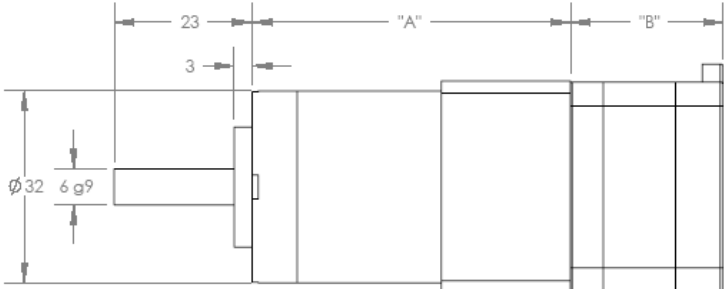


14GR

Round 35 □ 0.9°/1.8°/3.75°



Standard Motor Lengths	
Type	"B" (mm)
14GR-K2	22
14GR-K0	26

(PHASE)	A	-B	-A	B
(PIN NO.)	4	1	6	3

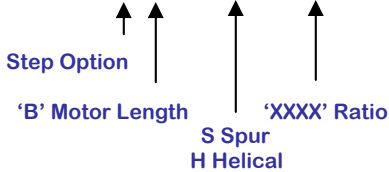
Gearbox Ratio Selection

Characteristics				
Dimension "A"	32.3mm	41.8mm	51.3mm	60.8mm
Max Torque	0.75Nm	2.25Nm	4.50Nm	4.50Nm
GB Eff	80%	75%	70%	65%
Max Backlash	1.5 deg	1.55 deg	1.6 deg	1.65 deg
Max Radial Load	40N	70N	100N	130N
Max Axial Load	10N	20N	30N	40N
GB Weight	160g	210g	260g	310g

Available Ratios							
1 Stage		2 Stages		3 Stages		4 Stages	
XXXX	Act	XXXX	Act	XXXX	Act	XXXX	Act
3:1	(3.70)	14:1	(13.73)	51:1	(50.89)	189:1	(188.61)
4:1	(4.28)	16:1	(15.88)	59:1	(58.85)	218:1	(218.12)
5:1	(5.18)	18:1	(18.36)	68:1	(68.06)	252:1	(252.24)
7:1	(6.75)	19:1	(19.20)	71:1	(71.16)	264:1	(263.72)
		22:1	(22.20)	79:1	(78.71)	292:1	(291.71)
		25:1	(25.01)	93:1	(92.70)	305:1	(304.99)
		27:1	(26.85)	95:1	(95.17)	337:1	(337.35)
		29:1	(28.93)	100:1	(99.50)	344:1	(343.54)
		35:1	(34.97)	107:1	(107.20)	353:1	(352.71)
		46:1	(45.56)	115:1	(115.07)	369:1	(368.76)
				124:1	(123.97)	397:1	(397.29)
				130:1	(129.62)	408:1	(407.89)
				139:1	(139.13)	426:1	(426.46)
				150:1	(149.90)	459:1	(459.45)
				169:1	(168.84)	480:1	(480.36)
				181:1	(181.24)	493:1	(493.18)
				195:1	(195.26)	516:1	(515.62)
				236:1	(236.09)	531:1	(531.34)
				308:1	(307.54)	556:1	(555.52)
						596:1	(596.30)
						626:1	(625.73)
						642:1	(642.42)
						672:1	(671.67)
						721:1	(720.98)
						724:1	(723.63)
						777:1	(776.76)
						837:1	(836.86)
						875:1	(874.94)
						939:1	(939.18)
						1012:1	(1011.84)
						1140:1	(1139.73)
						1223:1	(1223.41)
						1318:1	(1318.05)
						1594:1	(1593.65)
						2076:1	(2075.94)

Catalog Part Numbering

14GR - XXX - XXXXX



Example:

14GR-BK0-S0079

14GR – 14 Size Round Gearbox Motor
BK0 – 1.8 Degree, 26 mm long stator
S0079 – Spur Gearbox ratio of 79:1

Step Options:

- A** - 0.9 Degree
- B** - 1.8 Degree
- C** - 3.75 Degree

Other Available Options:

- Encoders
- Pinions
- Drivers

