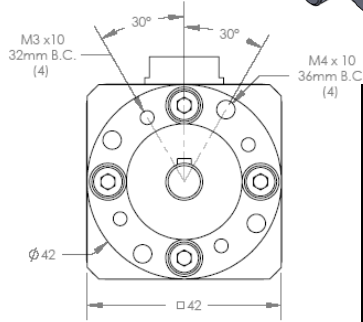
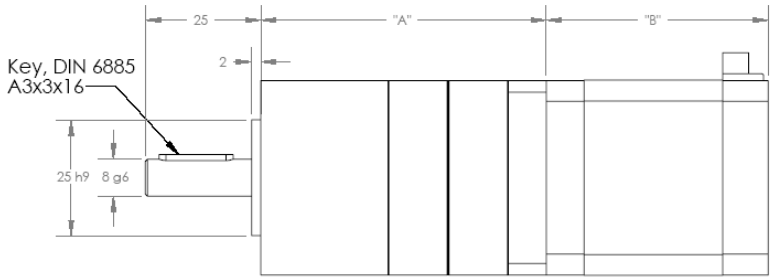
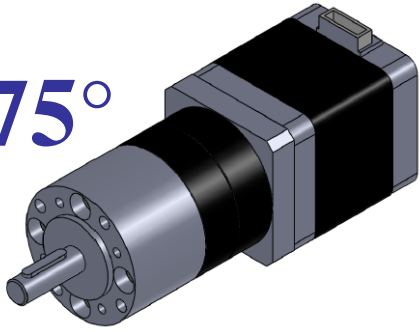


17GR

Round 42 0.9°/1.8°/3.75°



Standard Motor Lengths	
Type	"B" (mm)
17GR-K7	26
17GR-K2	30
17GR-K0	34
17GR-K3	38
17GR-K1	42
17GR-K4	48

(PHASE)	A	-B	-A	B
(PIN NO.)	4	1	6	3

Gearbox Ratio Selection

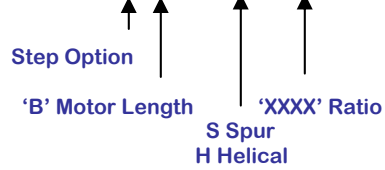
Characteristics				
Dimension "A"	49.1mm	62.2mm	75.3mm	88.4mm
Max Torque	3 Nm	7.5 Nm	15 Nm	15 Nm
GB Eff	80%	75%	70%	65%
Max Backlash	0.90 Deg	0.95 Deg	1.00 Deg	1.05 Deg
Max Radial Load	160N	230N	300N	360N
Max Axial Load	50N	80N	110N	140N
GB Weight	400g	500g	600g	700g

Available Ratios											
1 Stage			2 Stages			3 Stages			4 Stages		
Spur	Helical		Spur	Helical		Spur	Helical		Spur	Helical	
4:1 (3.70)	4:1 (3.65)	14:1 (13.73)	14:1 (13.53)	51:1 (50.89)	50:1 (50.16)	189:1 (188.61)	186:1 (185.88)				
4:1 (4.28)	5:1 (4.59)	16:1 (15.88)	16:1 (15.65)	59:1 (58.85)	58:1 (58.01)	218:1 (218.12)	215:1 (214.96)				
5:1 (5.18)	5:1 (5.36)	18:1 (18.36)	18:1 (17.01)	68:1 (68.06)	67:1 (67.08)	252:1 (252.24)	249:1 (248.59)				
7:1 (6.75)	7:1 (6.55)	19:1 (19.20)	19:1 (18.92)	71:1 (71.16)	70:1 (70.13)	264:1 (263.72)	260:1 (259.91)				
	9:1 (8.63)	22:1 (22.20)	22:1 (22.96)	79:1 (78.71)	81:1 (81.11)	292:1 (291.71)	287:1 (287.49)				
		25:1 (25.01)	25:1 (24.65)	93:1 (92.70)	91:1 (91.36)	305:1 (304.99)	301:1 (300.57)				
		27:1 (26.85)	27:1 (27.76)	95:1 (95.17)	98:1 (98.07)	337:1 (337.35)	339:1 (338.56)				
		29:1 (28.93)	29:1 (28.05)	100:1 (99.50)	101:1 (101.89)	344:1 (343.54)	348:1 (347.60)				
		35:1 (34.97)	35:1 (33.92)	107:1 (107.20)	106:1 (105.65)	353:1 (352.71)	361:1 (361.17)				
		46:1 (45.56)	46:1 (44.69)	115:1 (115.07)	115:1 (114.77)	369:1 (368.76)	365:1 (364.66)				
			58:1 (58.22)	124:1 (123.97)	123:1 (123.20)	397:1 (397.29)	392:1 (391.53)				
				130:1 (129.62)	128:1 (127.74)	408:1 (407.89)	420:1 (420.28)				
				139:1 (139.13)	137:1 (136.99)	426:1 (426.46)	425:1 (425.34)				
				150:1 (149.90)	145:1 (145.36)	459:1 (459.45)	457:1 (456.56)				
				169:1 (168.84)	166:1 (166.40)	480:1 (480.36)	473:1 (473.40)				
				181:1 (181.24)	176:1 (175.75)	493:1 (493.18)	492:1 (491.89)				
				195:1 (195.26)	192:1 (191.54)	516:1 (515.62)	515:1 (515.24)				
				236:1 (236.09)	232:1 (231.59)	531:1 (531.34)	533:1 (533.08)				
				308:1 (307.54)	302:1 (301.68)	566:1 (565.52)	547:1 (547.47)				
					393:1 (392.98)	596:1 (596.30)	595:1 (594.73)				
						626:1 (625.73)	623:1 (622.97)				
						642:1 (642.42)	638:1 (638.40)				
						672:1 (671.67)	679:1 (678.94)				
						721:1 (720.98)	713:1 (713.15)				
						724:1 (723.63)	745:1 (745.38)				
						777:1 (776.76)	775:1 (774.72)				
						837:1 (836.86)	832:1 (831.60)				
						875:1 (874.94)	862:1 (862.27)				
						939:1 (939.18)	925:1 (924.65)				
						1012:1 (1011.84)	1046:1 (1046.08)				
						1140:1 (1139.73)	1123:1 (1123.21)				
						1223:1 (1223.41)	1200:1 (1200.07)				
						1318:1 (1318.05)	1393:1 (1292.91)				



Catalog Part Numbering

17GR - XXX - XXXXX



Example:

17GR-BK0-S0079

17GR - 17 Size NEMA Gearbox Motor
BK0 - 1.8 Degree, 34 mm long stator
S0079 - Spur Gearbox ratio of 79:1

Step Options:
A - 0.9 Degree
B - 1.8 Degree
C - 3.75 Degree

Other Available Options:
 - Encoders
 - Pinions
 - Drivers