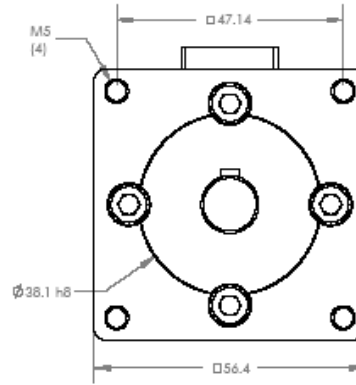
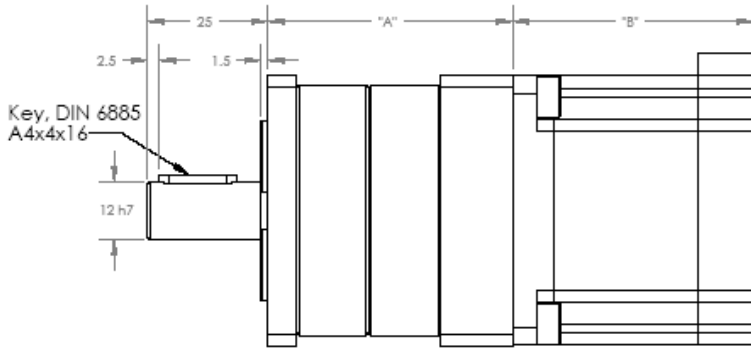
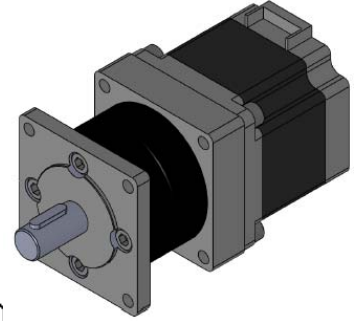


23GN

NEMA23 – 56 □ 0.9°/1.8°



(PHASE)	A	-B	-A	B
(PIN NO.)	4	1	6	3

Type	"B" (mm)
23GN-K2	42
23GN-K3	50
23GN-K0	54
23GN-K1	67
23GN-K7	76

Gearbox Ratio Selection

Characteristics				
Dimension "A"	76.6mm	90.8mm	105mm	119.2mm
Max Torque	4 Nm	12 Nm	25 Nm	25 Nm
GB Eff	80%	75%	70%	65%
Max Backlash	0.70 Deg	0.75 Deg	0.80 Deg	0.85 Deg
Max Radial Load	200N	320N	450N	500N
Max Axial Load	60N	100N	150N	200N
GB Weight	0.7 kg	0.9 kg	1.1 kg	1.3 kg

Available Ratios											
1 Stage			2 Stages				3 Stages			4 Stages	
Spur	Helical		Spur	Helical		Spur	Helical		Spur	Helical	
4:1 (3.70)	4:1 (3.65)		14:1 (13.73)	14:1 (13.53)		51:1 (50.89)	50:1 (50.16)		189:1 (188.61)	186:1 (185.88)	
4:1 (4.28)	5:1 (4.59)		16:1 (15.88)	16:1 (15.65)		59:1 (58.85)	58:1 (58.01)		218:1 (218.12)	215:1 (214.96)	
5:1 (5.18)	5:1 (5.36)		18:1 (18.36)	18:1 (17.01)		68:1 (68.06)	67:1 (67.08)		252:1 (252.24)	249:1 (248.59)	
7:1 (6.75)	7:1 (6.55)		19:1 (19.20)	19:1 (18.92)		71:1 (71.16)	70:1 (70.13)		264:1 (263.72)	260:1 (259.91)	
	9:1 (8.63)		22:1 (22.20)	22:1 (22.96)		79:1 (78.71)	81:1 (81.11)		292:1 (291.71)	287:1 (287.49)	
			25:1 (25.01)	25:1 (24.65)		93:1 (92.70)	91:1 (91.36)		305:1 (304.99)	301:1 (300.57)	
			27:1 (26.85)	27:1 (27.76)		95:1 (95.17)	98:1 (98.07)		337:1 (337.35)	339:1 (338.56)	
			29:1 (28.93)	29:1 (28.05)		100:1 (99.50)	101:1 (101.89)		344:1 (343.54)	348:1 (347.60)	
			35:1 (34.97)	35:1 (33.92)		107:1 (107.20)	106:1 (105.65)		353:1 (352.71)	361:1 (361.17)	
			46:1 (45.56)	46:1 (44.69)		115:1 (115.07)	115:1 (114.77)		369:1 (368.76)	365:1 (364.66)	
						124:1 (123.97)	123:1 (123.20)		397:1 (397.29)	392:1 (391.53)	
						130:1 (129.62)	128:1 (127.74)		408:1 (407.89)	420:1 (420.28)	
						139:1 (139.13)	137:1 (136.99)		426:1 (426.46)	425:1 (425.34)	
						150:1 (149.90)	145:1 (145.36)		459:1 (459.45)	457:1 (456.56)	
						169:1 (168.84)	166:1 (166.40)		480:1 (480.36)	473:1 (473.40)	
						181:1 (181.24)	176:1 (175.75)		493:1 (493.18)	492:1 (491.89)	
						195:1 (195.26)	192:1 (191.54)		516:1 (515.62)	515:1 (515.24)	
						236:1 (236.09)	232:1 (231.59)		531:1 (531.34)	533:1 (533.08)	
						308:1 (307.54)	302:1 (301.68)		556:1 (555.52)	547:1 (547.47)	
									596:1 (596.30)	595:1 (594.73)	
									626:1 (625.73)	623:1 (622.97)	
									642:1 (642.42)	638:1 (638.40)	
									672:1 (671.67)	679:1 (678.94)	
									721:1 (720.98)	713:1 (713.15)	
									724:1 (723.63)	745:1 (745.38)	
									777:1 (776.76)	775:1 (774.72)	
									837:1 (836.86)	832:1 (831.60)	
									875:1 (874.94)	862:1 (862.27)	
									939:1 (939.18)	925:1 (924.65)	
									1012:1 (1011.84)	1046:1 (1046.08)	
									1140:1 (1139.73)	1123:1 (1123.21)	
									1223:1 (1223.41)	1200:1 (1200.07)	
									1318:1 (1318.05)	1393:1 (1292.91)	
									1594:1 (1593.65)	1563:1 (1563.24)	

Step Options:
A - 0.9 Degree
B - 1.8 Degree

Other Available Options:
 - Encoders
 - Pinions
 - Drivers



Catalog Part Numbering

23GN – XXX – XXXXX

Step Option

'B' Motor Length

S Spur
H Helical

'XXXX' Ratio

Example:

23GN-BK0-S0079

23GN – 23 Size NEMA Gearbox Motor
BK0 – 1.8 Degree, 54 mm long stator
S0079 – Spur Gearbox ratio of 79:1