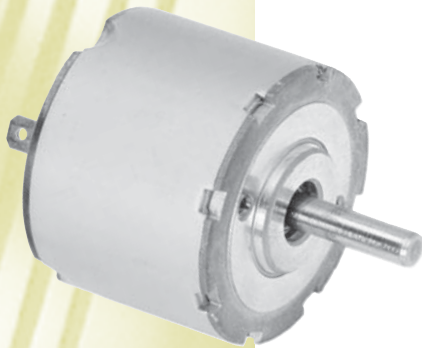
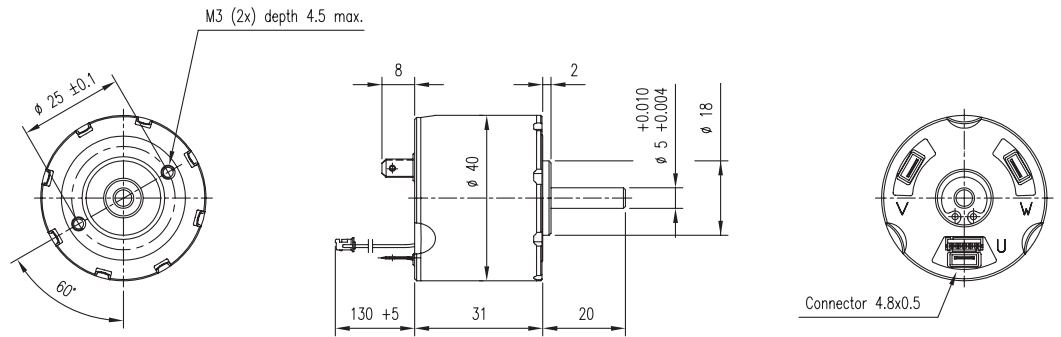


# BLDC40P10



## General Specification

Insulation class F  
 Protection IP20  
 Operating temperature – 20 ° C ... + 70°C  
 2 NMB ballbearings for long lifetime  
 Max. radial load 80 N (5mm from flange)  
 Max. axial load 50 N

## Features

Low cogging torque  
 High power to volume ratio  
 High efficiency at operating point  
 High reliability

## Options

Driver

NMB-Partnumber		BLDC40P10A-12V	BLDC40P10A-24V
		38.1.040	38.1.040
Rated Voltage	[V]	12	24
Rated Speed	[rpm]	3000	6000
Continuous Power	[W]	12	26.8
Rated Torque *1)	[mNm]	57.6	51.7
Continuous Stall Torque	[mNm]	78	78
Efficiency at Rated Speed	[%]	79.1	84.2
Current at Rated Speed	[A]	0.61	0.82
No Load Speed	[rpm]	3400	6800
Resistance per Phase *2)	[Ω]	1.58	1.58
Inductance per Phase	[mH]	1.3	1.3
Torque Constant	[mNm/A]	34	34
Speed Constant	[rpm/V]	265.3	265.3
Mech. Time Constant	[ms]	1.95	1.95
Rotor Inertia	[gcm <sup>2</sup> ]	16	16
Number of Poles		14	14
Weight	[g]	160	160
Thermal Resistance *3) *4)	[K/W]	9	9

\*1) motor torque at 70K temperature rising of winding

\*2) resistance phase to phase at 20°C

\*3) thermal resistance winding to ambient

\*4) motor is mounted on a sheet metal 210 mm x 40 mm x 0.8 mm