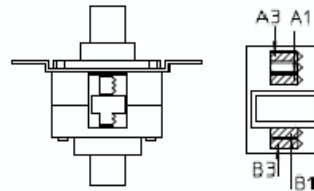


Note: Dimensions subject to change.

UNIT: mm

Model Specifications

Reference Characteristics	
Motor Size	PL25L-024
Drive Voltage	DC 12 [V]
Drive Current	
Winding Resistance	60 [Ω]
Magnet Material	Nd-F-B Magnet (MS70)
Drive Mode	Bipolar Const. Volt.
Phase on Method	2-2
Pitch/Step	0.050 , 0.0254 [mm]
Full Stroke	13.7 [mm]



Wire Color	Motor
Black	A1
Brown	A3
Orange	B1
Yellow	B3

Switching Sequence

(viewed from mounting surface)

Step	Color			
	Black	Brown	Orange	Yellow
1	-	+	+	-
2	-	+	-	+
3	+	-	-	+
4	+	-	+	-

Shaft-out ↓ (left side), Shaft-in ↑ (right side)

Torque/Speed Characteristics

PL25L-024 Force vs. Speed

