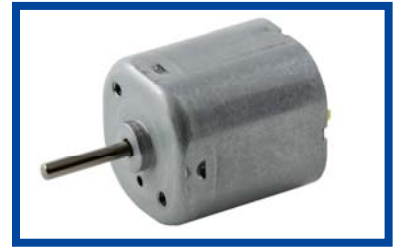
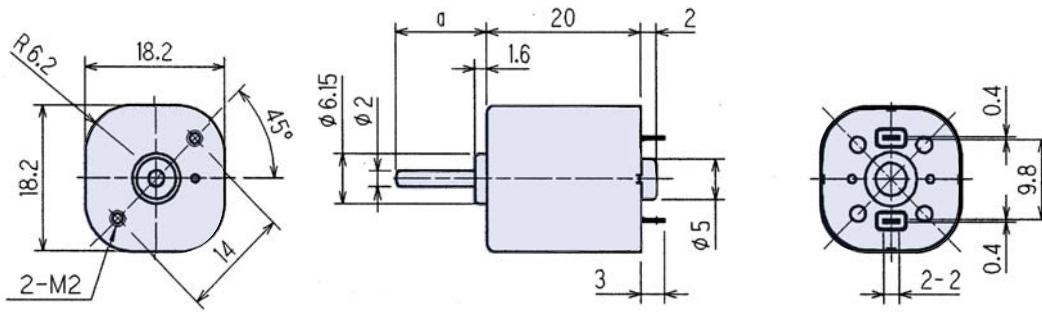


SE18J



Weight: 23.3 g

Outline UNIT:mm



Specifications

Model	Operating Voltage (V)	Rated Voltage (V)	No Load Speed (min^{-1})	No Load Current (mA)	Rated Load		Rated Load Speed (min^{-1})	Rated Load Current (mA)	Starting Torque		Starting Current (mA)	Shaft Length (mm)
					($\text{gf}\cdot\text{cm}$)	($\text{mN}\cdot\text{m}$)			($\text{gf}\cdot\text{cm}$)	($\text{mN}\cdot\text{m}$)		
SE18J0TTM	8 to 13	12.0	2886	31	30.6	3.0	2033	113	103.6	10.2	309	a=12.8
SE18J1CTM	8 to 13	12.0	5536	57	40.8	4.0	4425	264	203.4	19.9	1089	a=12.8

Characteristics

