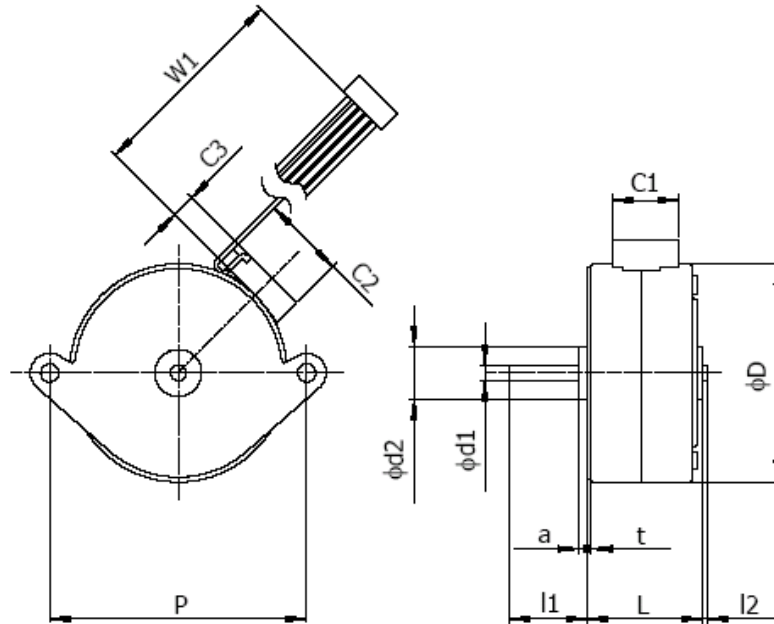


■ Description of Standard Dimensions (1)

- Lead wires: in the case of AWG28, lead wires conform to UL1061; in the case of AWG26, they conform to UL1007 and UL1430.
- Apart from discrete wire input connection, we also offer input connection by FPC.
- Please refer to the diagram for a standard front plate.
- Where the gear is attached to the shaft by press fitting, the length of shaft should be selected such that the end of the shaft extends more than 0.5mm beyond the end face of the gear. This reduces problems with press fitting.



SERIES	D	L MAX	d1 ^{+0/-0.01}	d2	a	C1	C2	C3	W1 MIN	t	W(AWG)
PM10S-020	10	10.2	1.5	6	1.2	-	-	-	-	0.5	FPC
PM15S-020	15	12	1.5	6	0.5	-	-	-	-	0.8	FPC
PM20S-020	20	15.5	1.5	6	1.5	11.9	8.4	4.5	50	0.8	28
PM20L-020	20	19.6	1.5	6	1.5	11.9	8.4	4.5	50	0.8	28
PM25S-024,048	25	12.5	2	7	1.5	11.9	8.4	4.5	50	0.8	28
PM25L-024	25	17	2	7	1.5	11.9	8.4	4.5	50	0.8	28
PM35S-024,048	35	15.5	2/3	10	1.5	12.7	15.8	5.5	50	0.8	28
PM35L-024,048	35	22.2	2/3	10	1.5	12.7	15.8	5.5	50	0.8	28
PM42S-048,096,100	42	15.5	3	10	1.5	12.7	15.8	5.5	50	0.8	28
PM42M-048	42	20	3	10	1.0	17.4	13	5.5	50	0.8	28
PM42L-048	42	22.2	3	10	1.5	12.7	15.8	5.5	50	0.8	28
PM55L-048,096,100	55	25.7	4/6.345	11.13	2.3	12.7	15.8	5.5	50	1.6	28

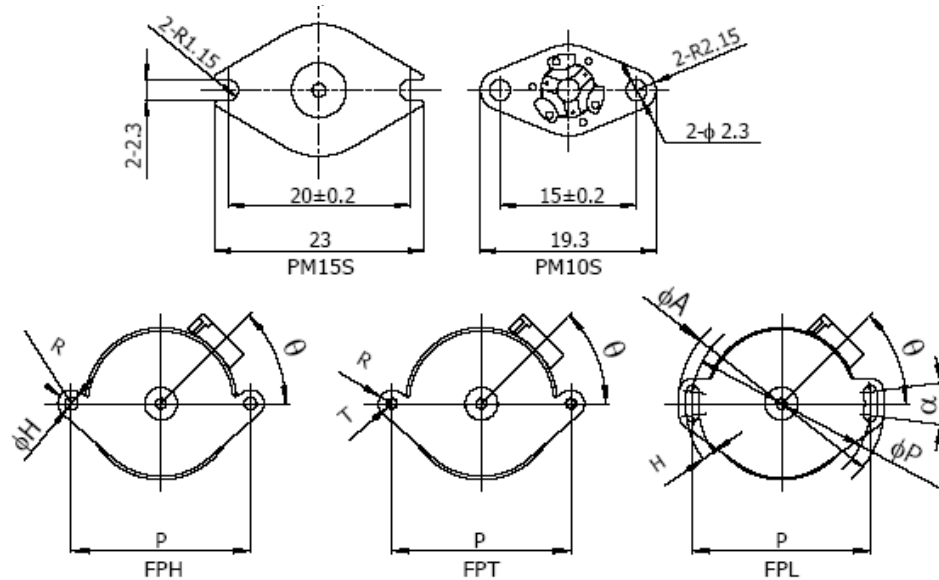
Selection of PM Motors

■ Description of Standard Dimensions (2)

SERIES	Front Plate Type	θ									p ^{#0.2}	H	T	α	R	A	Applicable Screw
		30°	45°	60°	75°	90°	105°	120°	135°	150°							
PM10S	PM10S Type					*					15	-	-	-	-	-	M2
PM15S	PM15S Type	*				*				*	20	-	-	-	-	M2	
PM20S,20L	FPH/FPT	*				*				*	28	2.3	M2	18°	3		
	FPL		*	*	*	*	*	*	*	*	25						
PM25S,25L	FPH/FPT	*	*	*	*	*	*	*	*	*	32	3	M2.6	15°	3.3	38.6	M2.6
	FPL		*	*	*	*	*	*	*	*					3.5	49	
PM35S,35L	FPH/FPT	*	*	*	*	*	*	*	*	*	42	3.2	M3	15°	3.75	57	M3
	FPL		*	*	*	*	*	*	*	*							
PM42S,42L	FPH/FPT	*	*	*	*	*	*	*	*	*	49.5	3.5	M3	-	-	-	
	FPL		*	*	*	*	*	*	*	*							
PM42M	FPH/FPT	*	*	*	*	*	*	*	*	*							
PM55L	FPH/FPT	*	*	*	*	*	*	*	*	*	65	4.3	15°	5	75		
	FPL		*	*	*	*	*	*	*	*	66.7						
			*	*	*	*	*	*	*	*	65	3.5					

The front plate of PM standard type is prepared 3 types as standard type, a FPH is circle hole type of a installing hole, a FPT is tap (female screw) type, a FPL is long hole type. Except for the PM 55 series, all FPT of tap type gave burring (Burring direction is a main body of the motor side).

Please refer to the following table so that a standard collecting of installing hole type and installing angle is different by the series. Please note when you hope the other form and installing angle, the initial cost of the die is generated besides.



SERIES	l ₁ (Standard Shaft Length)																				l ₂ MAX	
	5	5.5	6	6.5	7	7.5	8	8.5	9	9.5	10	11	12	13	14	15	16	18	20	22		24
PM10S-020	*	*	*	*	*	*	*	*	*	*	*	*	*	*	*	*	*	*	*	*	*	1.0
PM15S-020	*	*	*	*	*	*	*	*	*	*	*	*	*	*	*	*	*	*	*	*	*	1.0
PM20S-020	*	*	*	*	*	*	*	*	*	*	*	*	*	*	*	*	*	*	*	*	*	1.0
PM20L-020	*	*	*	*	*	*	*	*	*	*	*	*	*	*	*	*	*	*	*	*	*	1.0
PM25S-024,048				*	*	*	*	*	*	*	*	*	*	*	*	*	*	*	*	*	*	1.0
PM25L-024				*	*	*	*	*	*	*	*	*	*	*	*	*	*	*	*	*	*	1.0
PM35S-024,048				*	*	*	*	*	*	*	*	*	*	*	*	*	*	*	*	*	*	1.0
PM35L-024,048				*	*	*	*	*	*	*	*	*	*	*	*	*	*	*	*	*	*	1.0
PM42S-048,096,100				*	*	*	*	*	*	*	*	*	*	*	*	*	*	*	*	*	*	1.0
PM42M-048				*	*	*	*	*	*	*	*	*	*	*	*	*	*	*	*	*	*	1.5
PM42L-048				*	*	*	*	*	*	*	*	*	*	*	*	*	*	*	*	*	*	1.0
PM55L-048,096,100				*	*	*	*	*	*	*	*	*	*	*	*	*	*	*	*	*	*	1.0