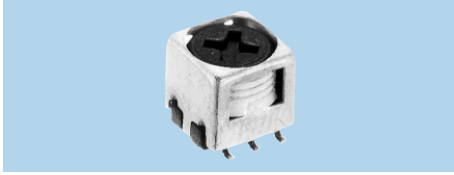


Coils for Corner sensor

K5-N, K5-R, K7-R Series

K5-N

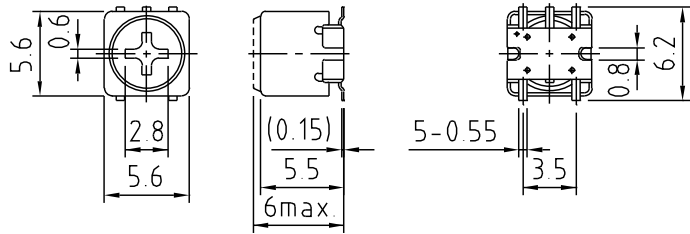


Specifications

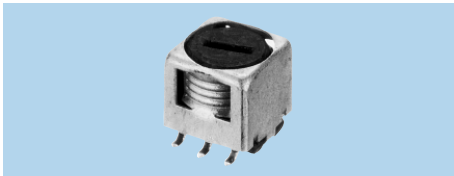
- (1) 1~4.0mH
- (2) 0.1~20MHz
- (3) F:±2%
L:±5%
- (4) -
- (5) Q:50~100

Features

- SMD
- 1,000pcs./Reel



K5-R2

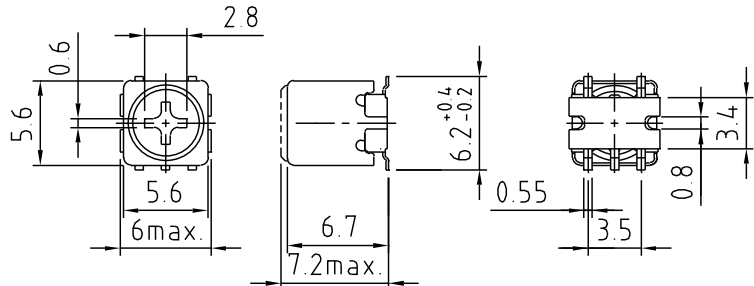


Specifications

- (1) 1~6.7mH
- (2) 10~500kHz
- (3) F:±2%
L:±4%
- (4) -
- (5) Q:50~80

Features

- SMD
- 500pcs./Reel



K5-RS

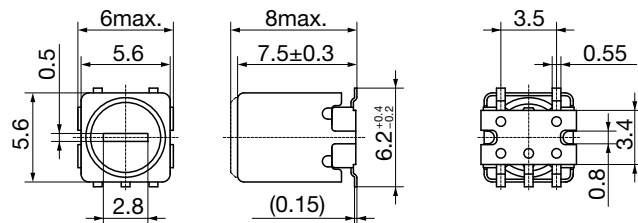


Specifications

- (1) 0.1~8.5mH
- (2) 10~500kHz
- (3) F:±2%
L:±5%
- (4) -
- (5) Q:50~80

Features

- SMD
- 500pcs./Reel



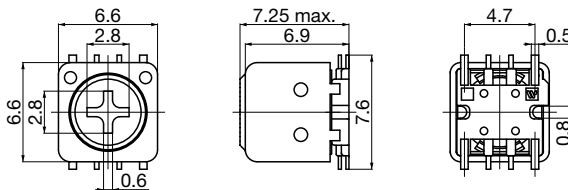
- (1) Inductance
- (2) Operational frequency
- (3) Variable range of F & L
- (4) Internal capacitance
- (5) Unloaded Q

K5-R3

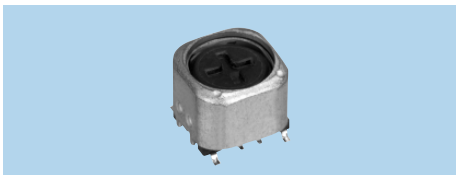


Specifications

- (1) 1~4mH
- (2) 40~100kHz
- (3) F:±2%
L:±5%
- (4) -
- (5) Q:40~60



K7-R

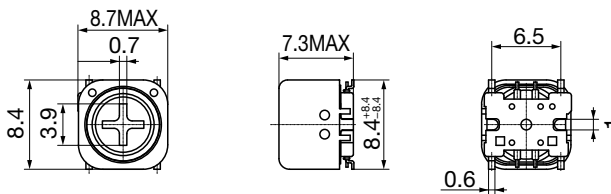


Specifications

- (1) 0.1~8.5mH
- (2) 10~100kHz
- (3) F:±2%
L:±5%
- (4) -
- (5) Q:40~60

Features

- SMD
- Double shield case
- 400pcs./Reel



- (1) Inductance
- (2) Operational frequency
- (3) Variable range of F & L
- (4) Internal capacitance
- (5) Unloaded Q