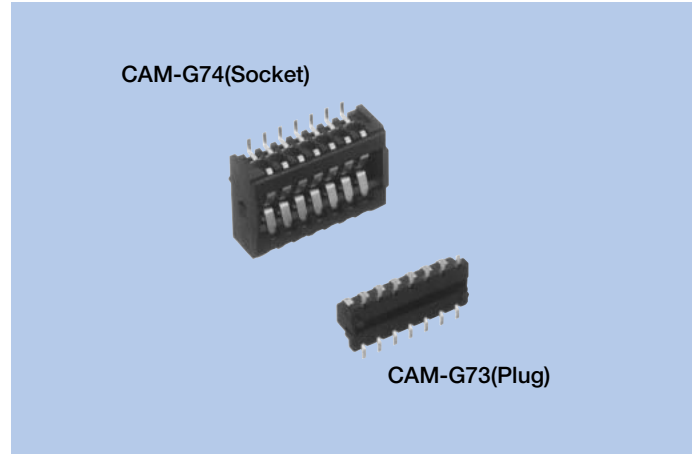


Detach Connectors CAM-G73, G74

FEATURES

1. It is 14 pins connector used for detaching between the operation panel and the unit etc.
2. The amount of the gap absorption when engaging is X direction $\pm 0.5\text{mm}$, Y direction $\pm 0.4\text{mm}$, Z direction $\pm 0.5\text{mm}$.
3. A cap to prevent adhesion of soldering flux during manual soldering is provided on the plug side.



HOW TO ORDER

1. CAM-G73 (Plug)
G73-014-230-AGGAA
1 2
- 1 Series No. (G73)
- 2 No. of contacts (014 : 14pins)

2. CAM-G74 (Socket)
G74-014-050-BGGAA
1 2
- 1 Series No. (G74)
- 2 No. of contacts (014 : 14pins)

SPECIFICATIONS

ELECTRICAL CHARACTERISTICS

Rated Voltage	125V DC
Rated Current	1A
Withstanding Voltage	500V AC (rms) 1minute
Insulation Resistance	500M Ω min. (at 500V DC)
Contact Resistance	40m Ω max.

MECHANICAL CHARACTERISTICS

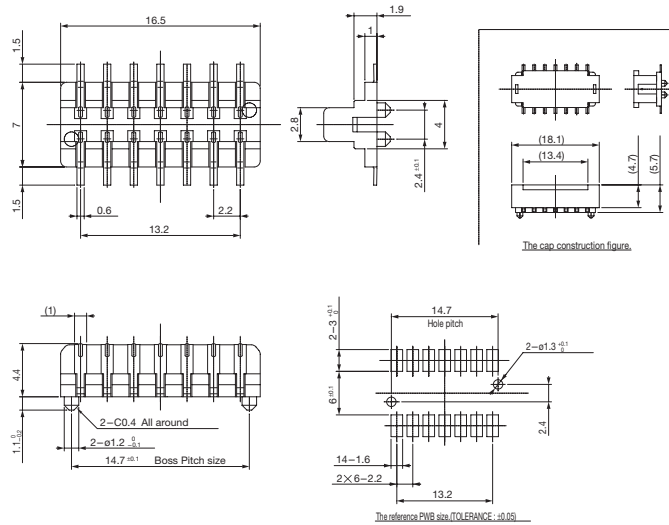
Life (Matching Cycle)	10,000times
Total Insertion Force	6.0N (0.61kgf) max.
Total Rebound Force	5.1N (0.52kgf) max.
Using Temperature Range	-30~+85°C

MATERIAL & FINISH

Component Parts		Material	Finish
CAM-G73	Housing	PBT resin	(Black)
	Contact	Copper Alloy	Gold plating
	Cap	PBT resin	(Black)
CAM-G74	Housing	PPS resin	(Black)
	Contact	Copper Alloy	Gold plating

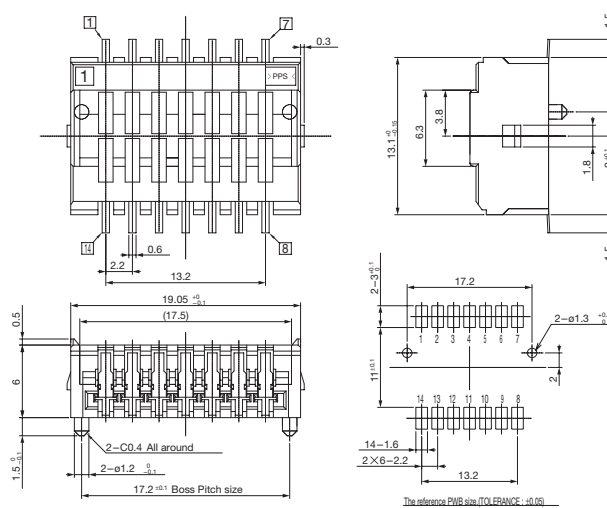
DIMENSIONS

CAM-G73 (Plug)



CAM-G74 (Socket)

For reflow solder



Unit : mm

• Any products mentioned in this catalog are subject to any modification in their appearance and others for improvements without prior notification.
 • The details listed here are not a guarantee of the individual products at the time of ordering. When using the products, you will be asked to check their specifications.