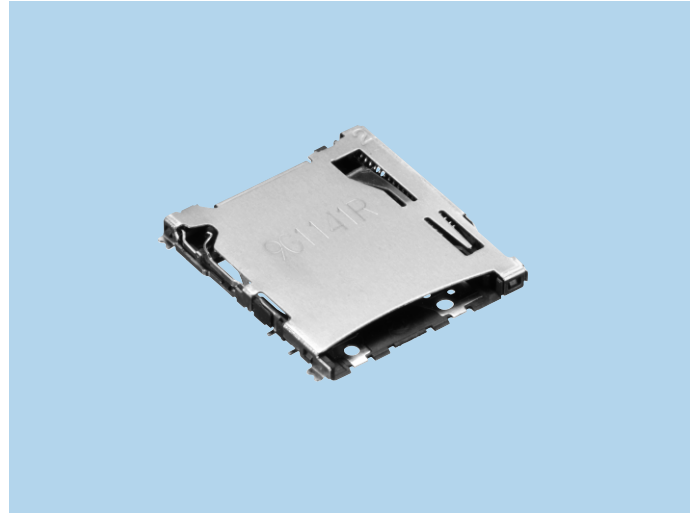


microSD Memory Card Connectors

CIM-H75N4

OUTLINE

1. Push-in Push-out ejection format
Card exposure 3.78 mm
2. Miniature, low-profile design.
Normal mount type:
Height 1.40 mm, width 13.7 mm, depth 15.3 mm
3. Includes function to prevent card popping out.
4. Built-in card detection switch
(normally open type)
5. RFID terminal included.



SPECIFICATIONS

ELECTRICAL CHARACTERISTICS

Rated Voltage	DC 10V
Rated Current	0.5A
Withstanding Voltage	500V AC (rms) 1minute
Insulation Resistance	1000M Ω min. (Initial value)
Contact Resista	100m Ω max. (Initial value)

MECHANICAL CHARACTERISTICS

Life (Matching Cycle)	10,000 cycles
Card Insertion Force	4.5N~7.5N
Eject Force	4.5N~7.5N
Using Temperature Range	-30~+70°C

