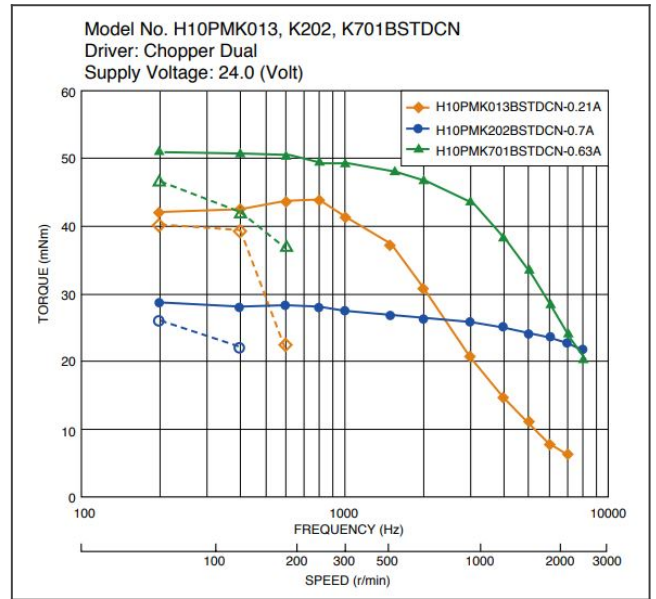


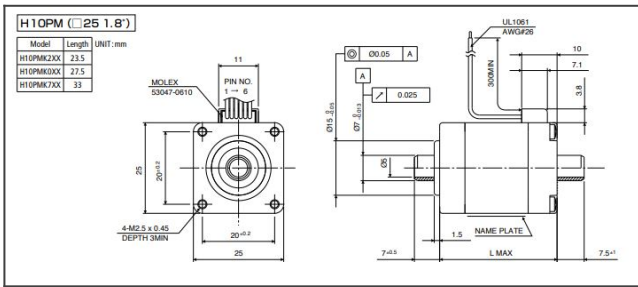
**order part H10PMK701BSTDCN Hybrid Step Motor Hollow Shaft Hybrid Stepping Motors**



**H10PMK701BSTDCN graph**



**H10PMK701BSTDCN product drawing**



**Hybrid Stepping Motors**

## Detailed Specifications

<b>Hybrid Motor:</b>	Hybrid Step Motor Hollow Shaft
<b>Step Angle:</b>	1.8[degrees]
<b>Motor Size "L":</b>	25x33[mm]
<b>Drive Sequence:</b>	BI-POLAR
<b>Rated Current:</b>	0.63[A]
<b>Resistance:</b>	5.8[Ohms]
<b>Holding Torque:</b>	56[mNm]
<b>Inductance:</b>	5.4[mH]
<b>Rotor Inertia:</b>	5[g/cm <sup>2</sup> ]
<b>Mass:</b>	90[g]