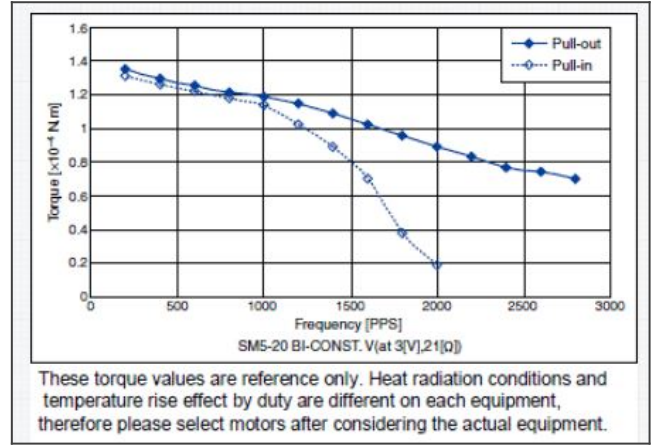


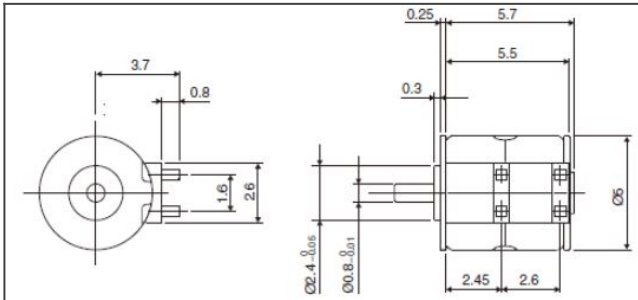
sm5-20 product picture



sm5-20 graph



sm5-20 product drawing



PM

Detailed Specifications

PM Type:	Small Diameter
Motor Size:	5
Number of Steps per Rotation:	20 (18deg/Step)
Drive Method:	2-2 PHASE
Drive Circuit:	Bipolar Constant Voltage
Drive Voltage:	3
Coil Resistance / Phase:	21
Drive IC:	LB1836M
Magnet Material:	Nd-Fe-B bonded magnet (N51)
Insulation Resistance (M):	1
Dielectric Strength:	100
Class of Insulation:	CLASS E
Operating Temp Lower:	-10
Operating Temp Upper:	50
Storage Temp Lower:	-25
Storage Temp Upper:	60
Operating Hum. Lower:	5
Operating Hum. Upper:	85

PM